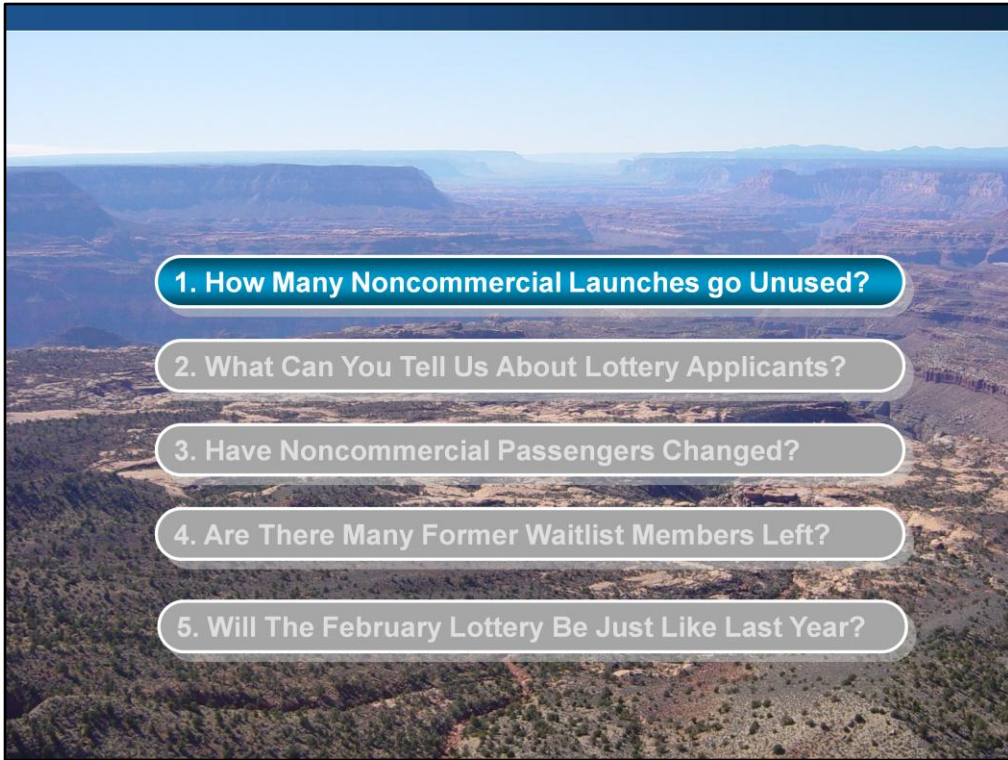


It has been four years since the 2006 Colorado River Management Plan (CRMP) was adopted. The following pages answer five questions the National Park Service was recently asked:

- How many noncommercial launches go unused?
- What can you tell us about lottery applicants?
- Have noncommercial passengers changed?
- Are there many former waitlist members left?
- Will the February 2012 Main Lottery be just like the February 2011 Main Lottery?

This presentation was given on Oct. 31, 2010 by Steve Sullivan, Permits Program Manager, Grand Canyon National Park and posted on Grand Canyon National Park's website on Nov 3, 2010.



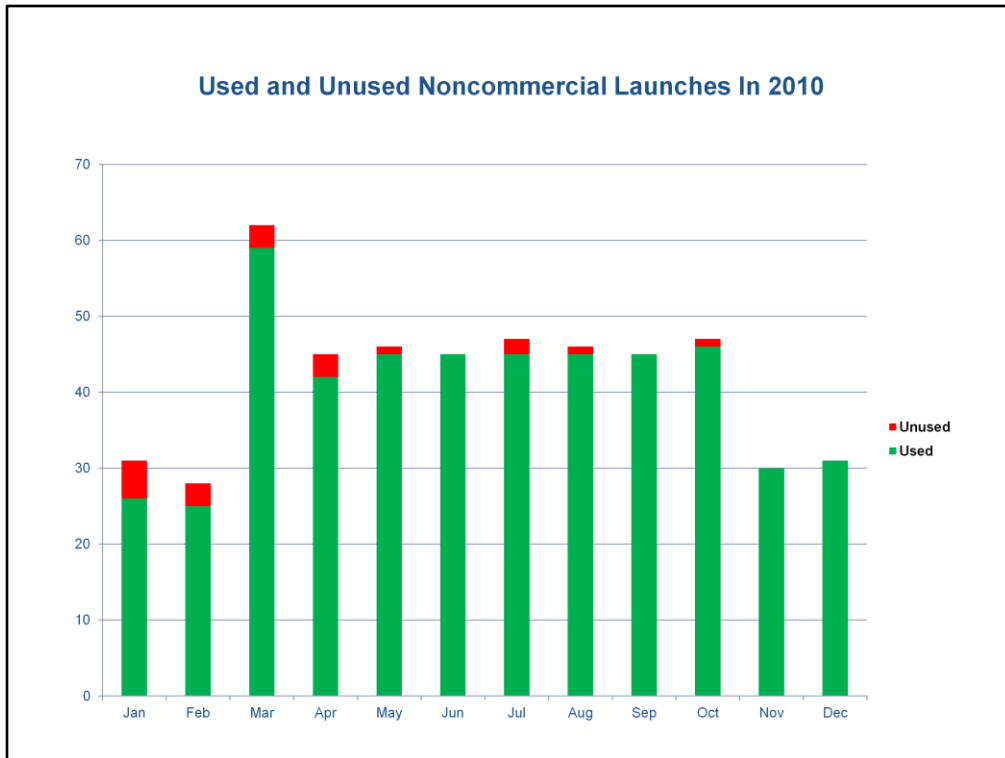
1. How Many Noncommercial Launches go Unused?

2. What Can You Tell Us About Lottery Applicants?

3. Have Noncommercial Passengers Changed?

4. Are There Many Former Waitlist Members Left?

5. Will The February Lottery Be Just Like Last Year?

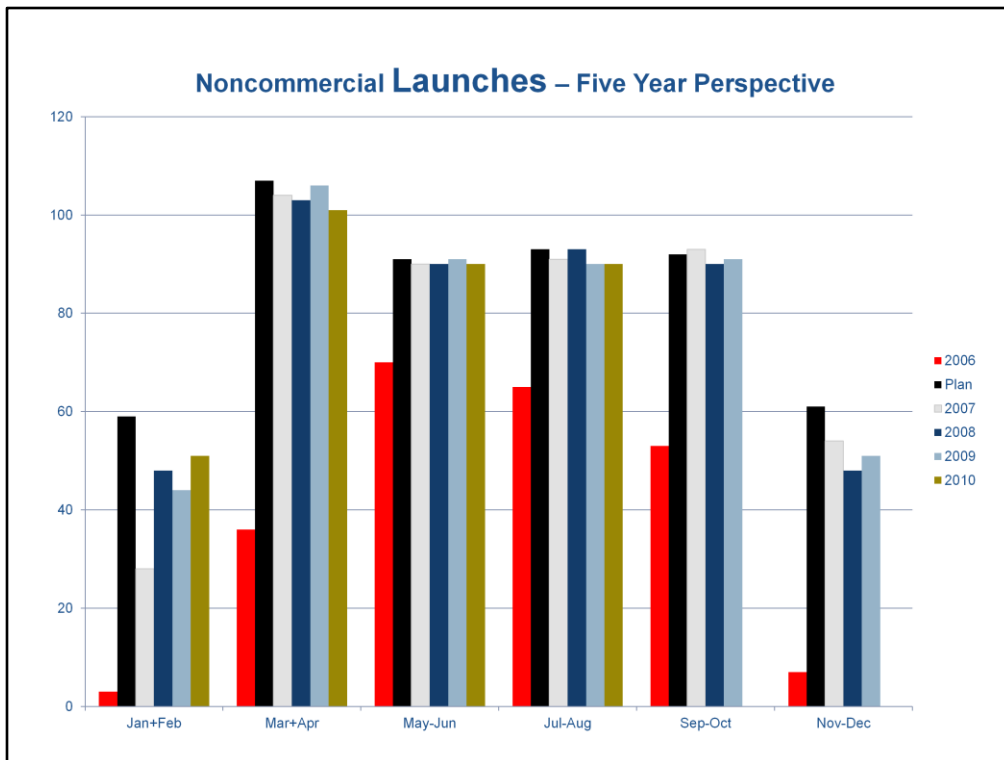


About the chart

- This chart shows:

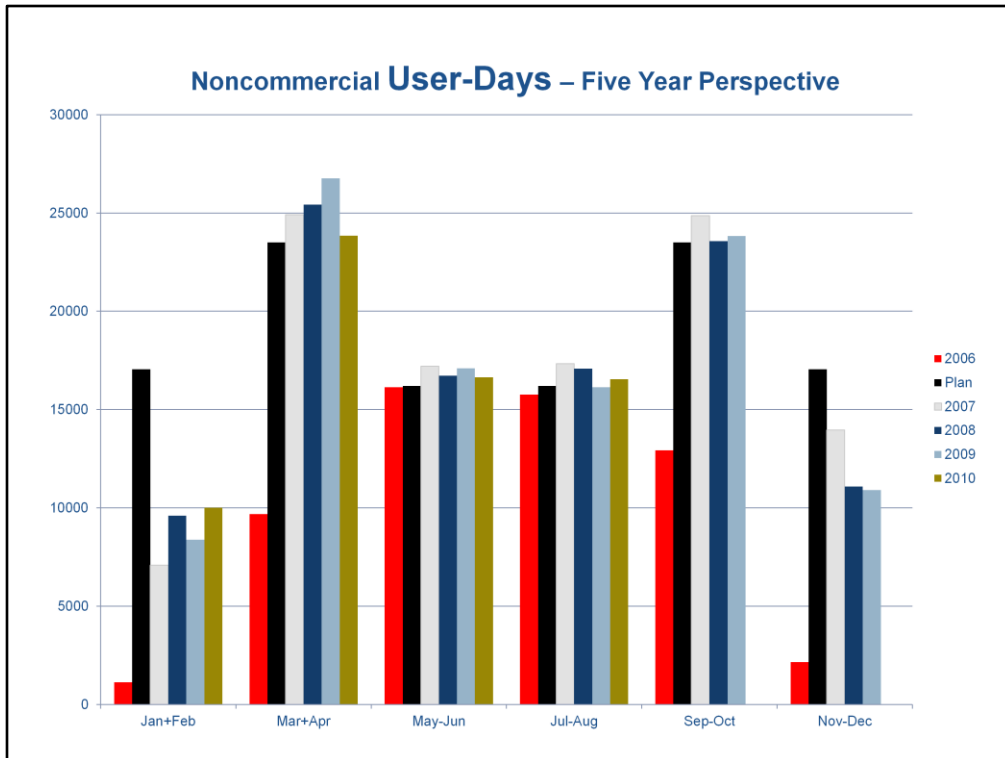
- the total allocation of noncommercial launches,
- how many of these trips actually took place in calendar year 2010,
- and how many trips went unused

(note: at one time all calendar year 2010 launches had been claimed—trips in red are the result either of late cancellations or trips that never showed up to launch at Lees Ferry).



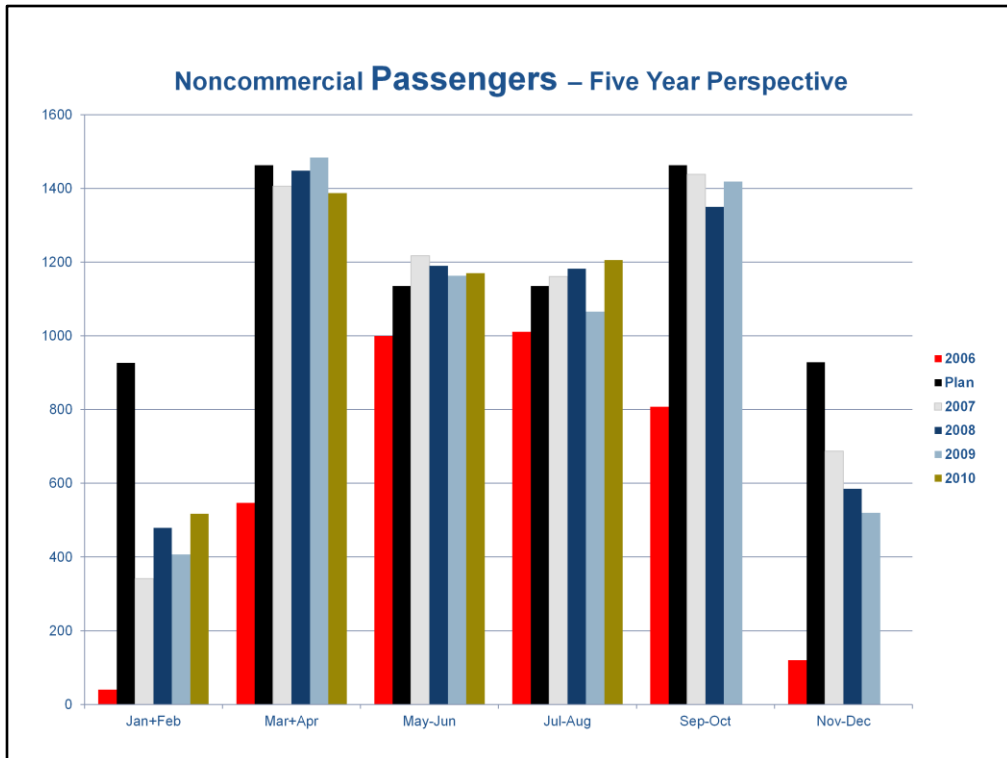
About the chart

- This chart synthesizes five years of noncommercial launches, showing all the following:
 - The red column shows how many trips launched in 2006 (the last year under the old CRMP).
 - The black column shows predicted levels of launches under the 2006 CRMP.
 - The rest of the columns show actual use from each subsequent year since the 2006 CRMP was implemented.
- Actual launch levels are close to predicted levels from March through October, while actual Winter use remains a bit below predicted levels.
- Since the CRMP always predicted use in terms of launches, user-days, and passengers, this **launches** chart is followed by a chart on **user-days** and a chart on **passengers**.



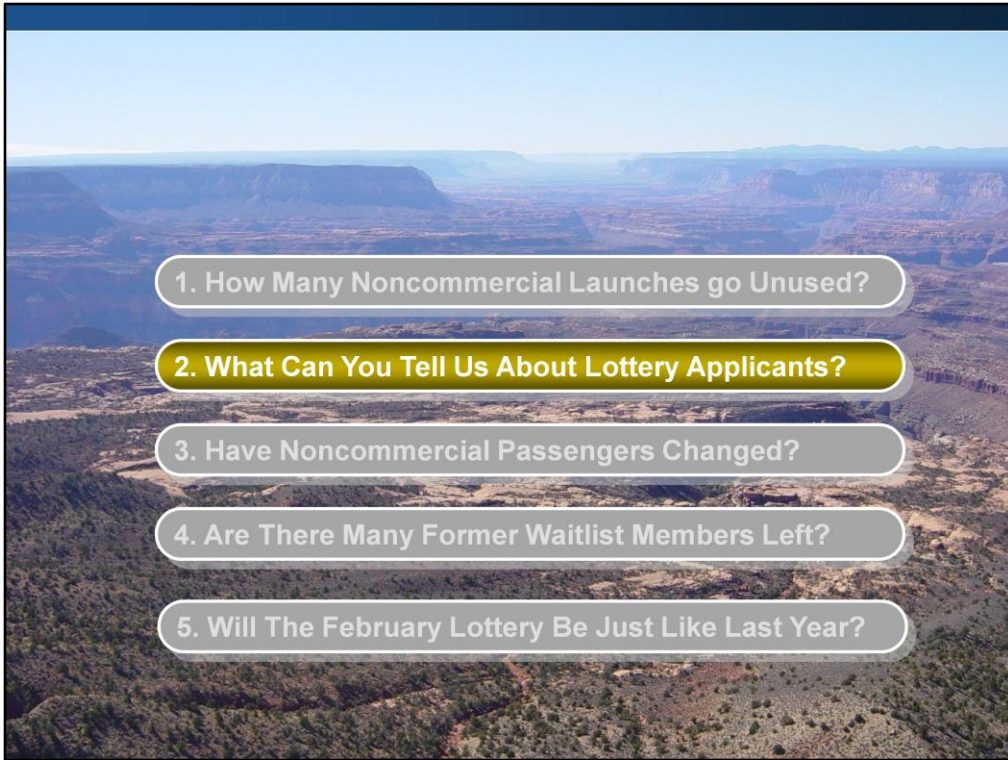
About the chart

- This chart is like the previous chart but focuses on noncommercial user-days
- In terms of user-days, actual use from March through October slightly exceeds the levels predicted in the 2006 CRMP.



About the Chart

- This chart is like the previous chart but focuses on noncommercial passengers.



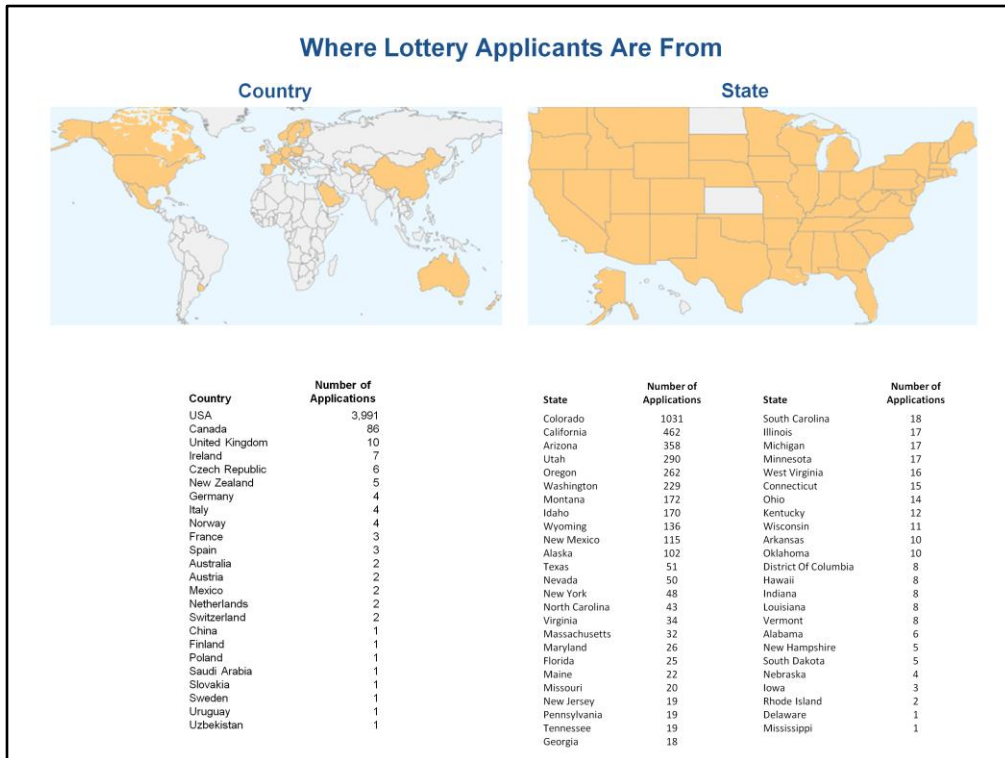
1. How Many Noncommercial Launches go Unused?

2. What Can You Tell Us About Lottery Applicants?

3. Have Noncommercial Passengers Changed?

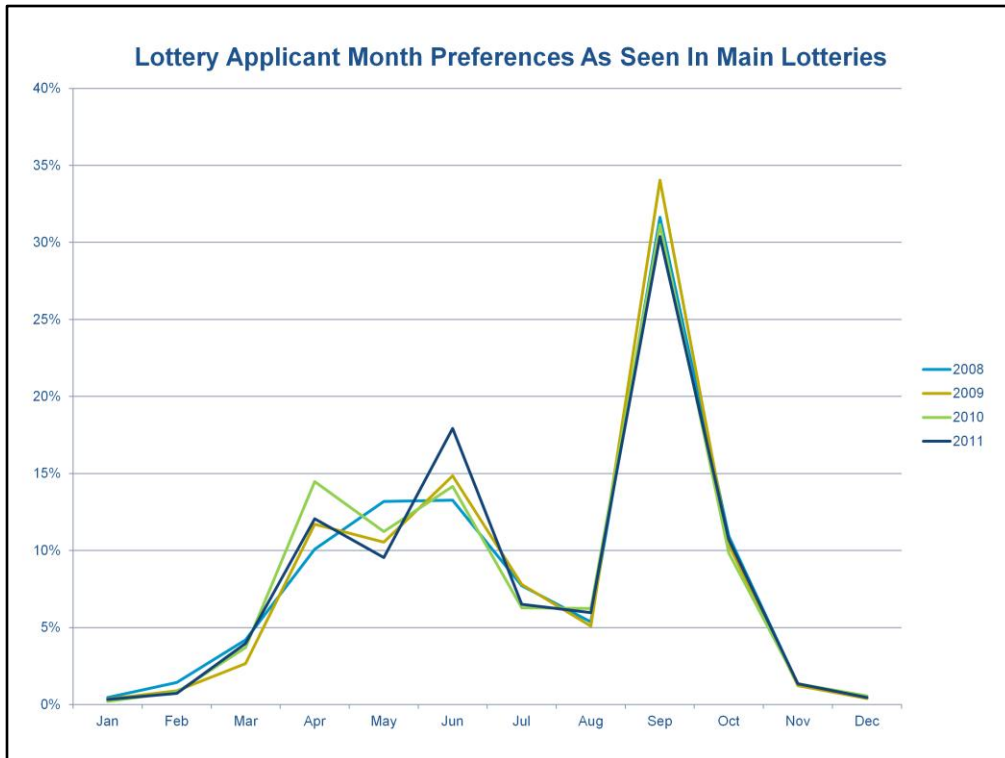
4. Are There Many Former Waitlist Members Left?

5. Will The February Lottery Be Just Like Last Year?



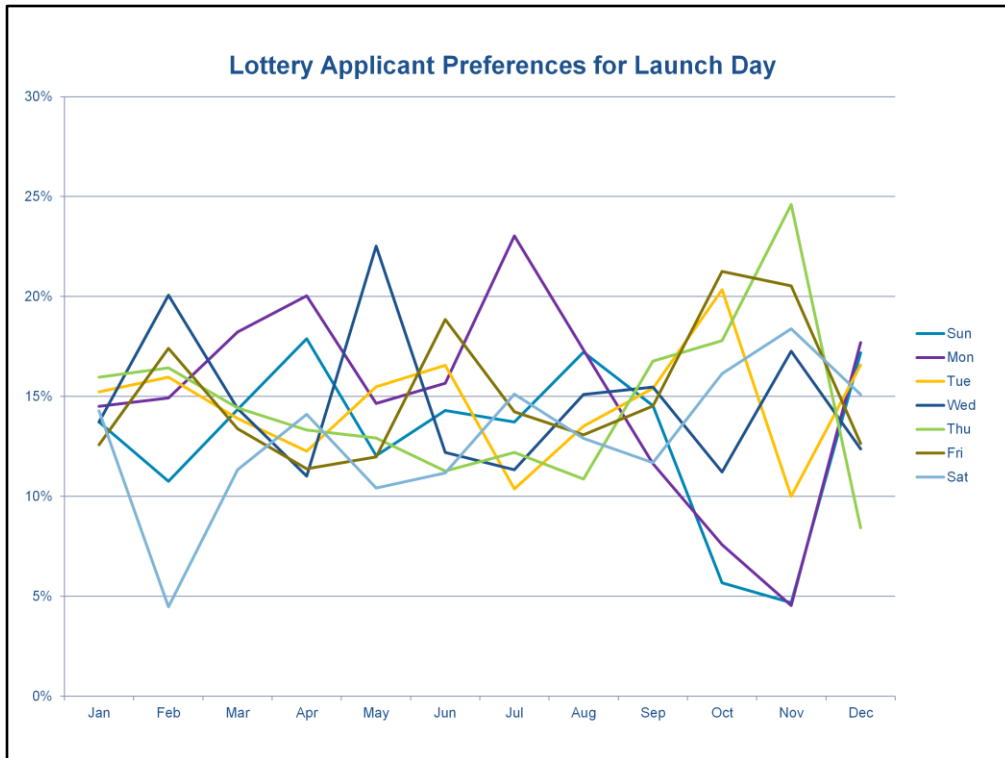
As most people know, Grand Canyon is a World Heritage Site and one of the Seven Natural Wonders of the World. It is therefore no surprise that people from all over the world apply for Grand Canyon river permits. Foreign applicants account for around 3.5% of all lottery applications.

We receive applications from almost all of the United States, but over 25% of these applications are from Colorado. Arizona applicants account for 9%.

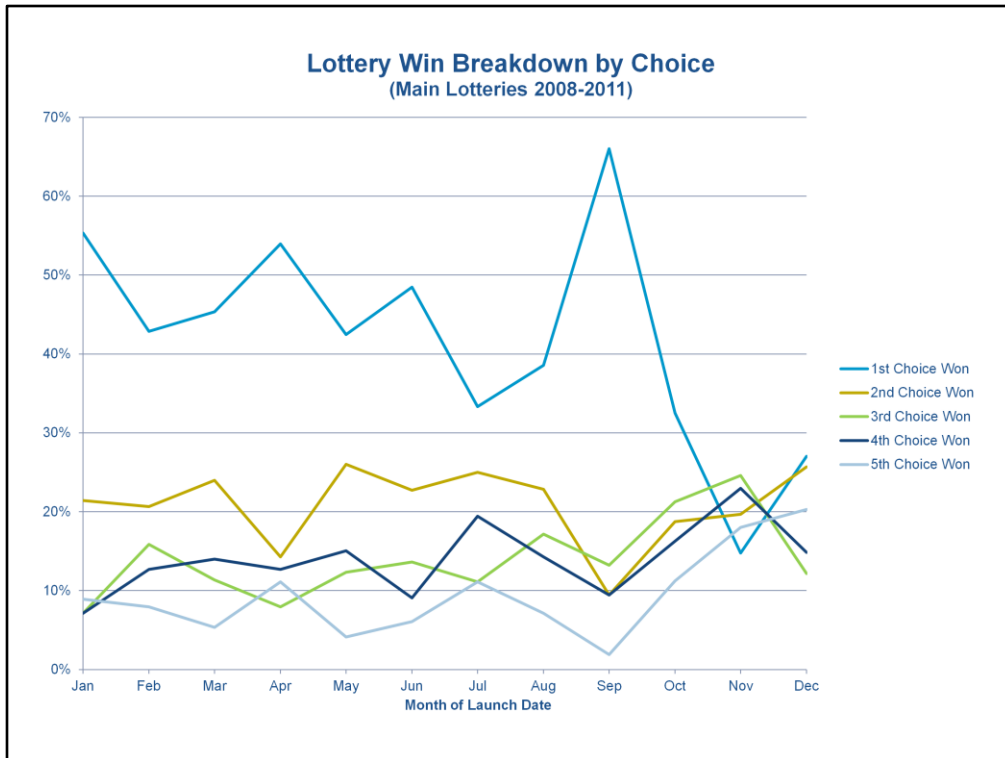


This chart shows how often launch dates from the different months are listed on lottery applications.

- Around 30% of the time lottery applicants choose to list September launch dates in their lottery applications.
- Around 6% of the time lottery applicants choose to list August launch dates on their lottery applications.

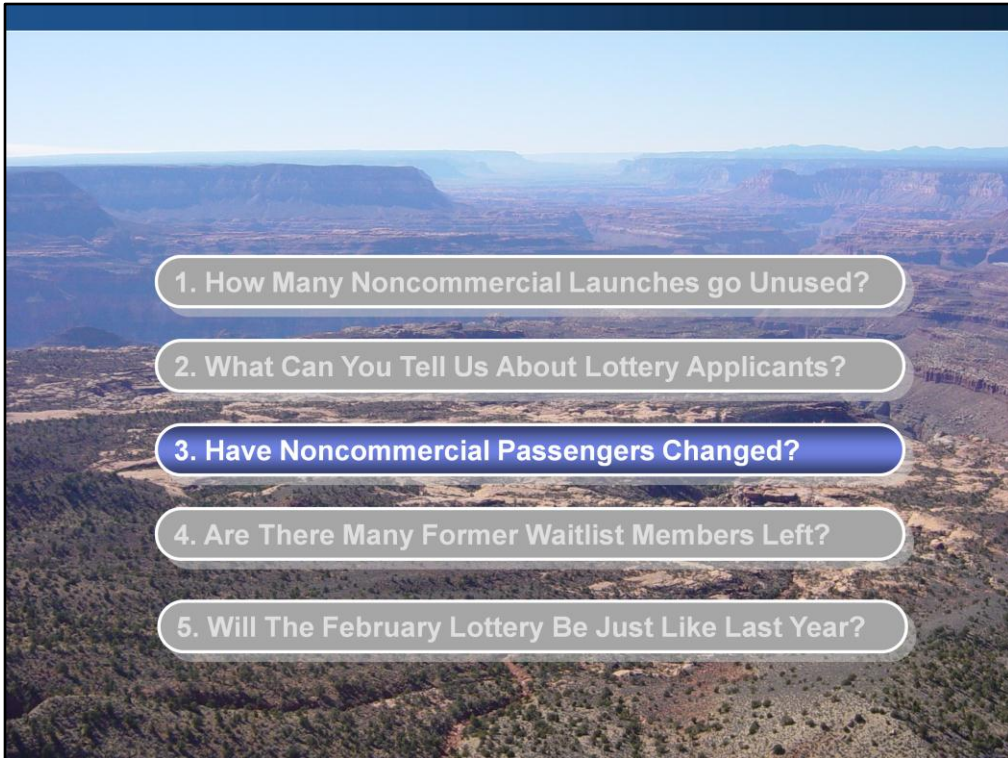


Some have asked if lottery applicants tend to choose launches that will occur on particular days of the week. We do not see a discernable pattern.



This chart shows the importance of listing five launch dates on a lottery application:

- Around 50% of the time winners win their first choice from their application.
- Around 20% of the time they win their second choice.
- Around 15% of the time they win their third choice.
- Around 10% of the time they win their fourth choice.
- Around 5% of the time they win their fifth choice.



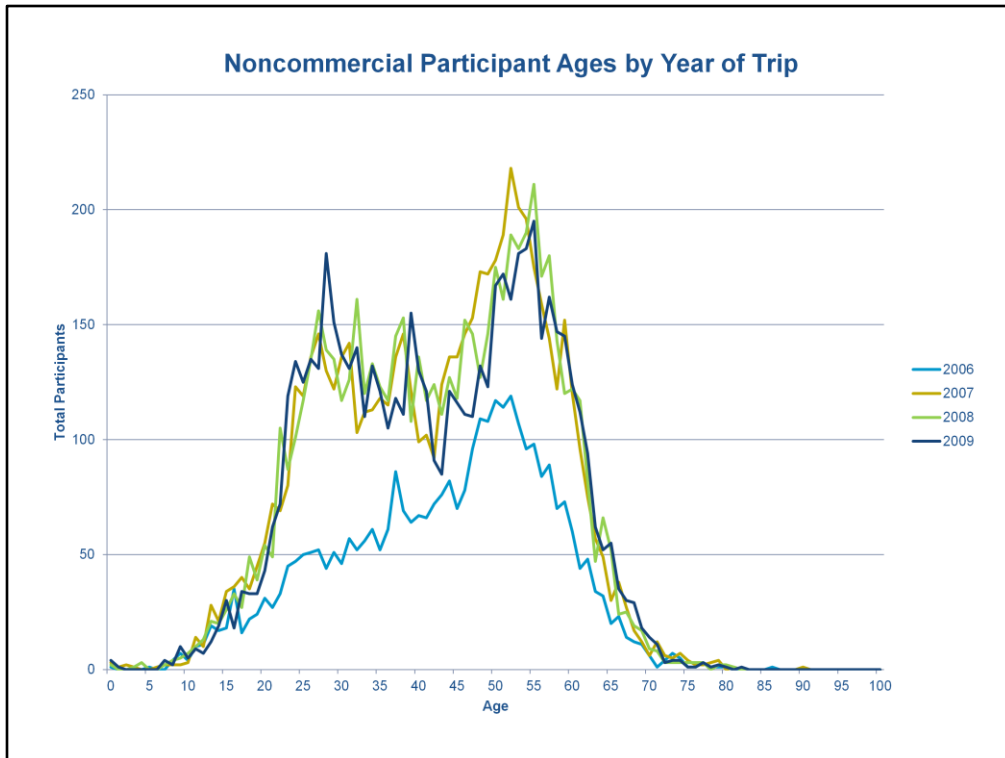
1. How Many Noncommercial Launches go Unused?

2. What Can You Tell Us About Lottery Applicants?

3. Have Noncommercial Passengers Changed?

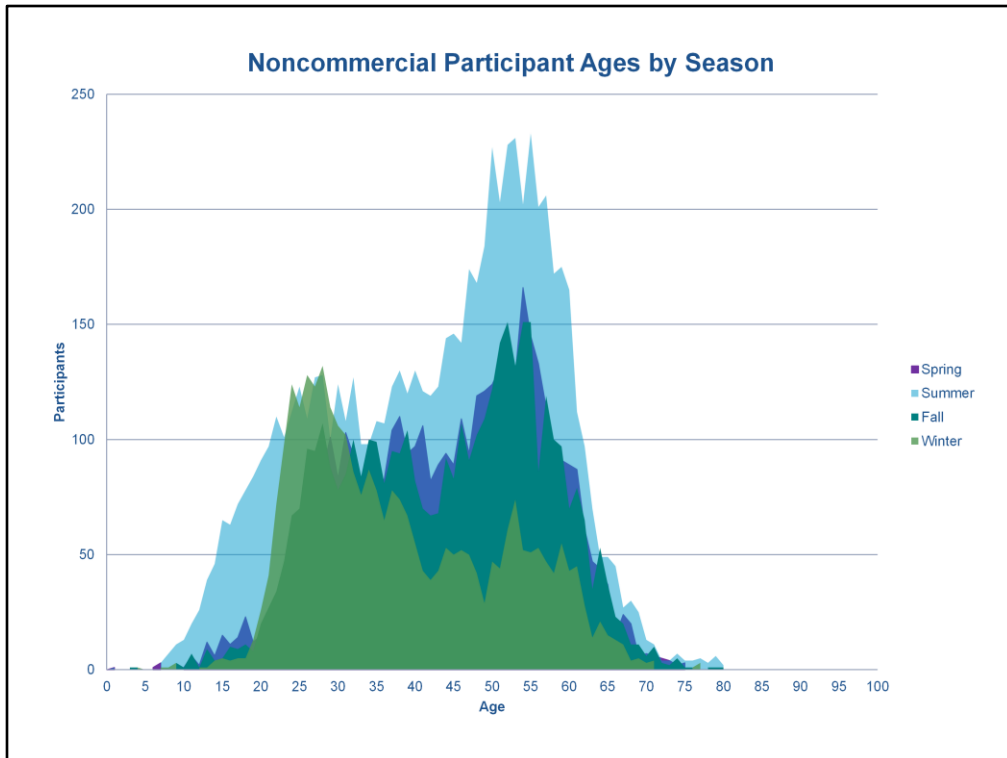
4. Are There Many Former Waitlist Members Left?

5. Will The February Lottery Be Just Like Last Year?

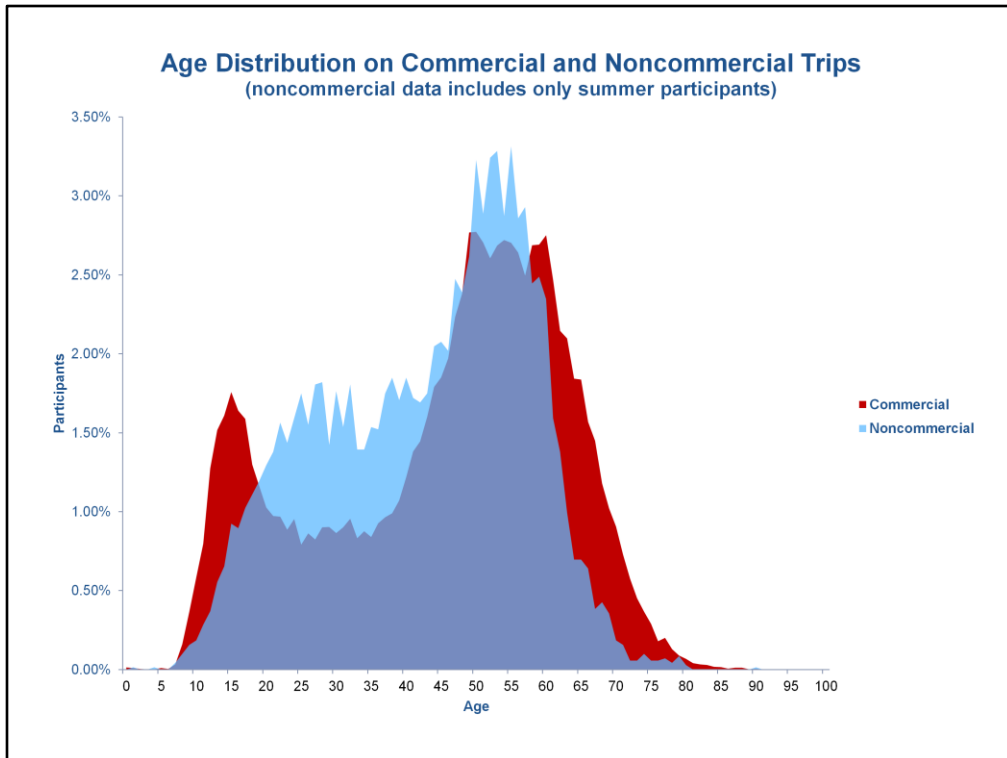


This chart shows participant ages under the old CRMP (the blue line) then for each year under the 2006 CRMP. This chart shows:

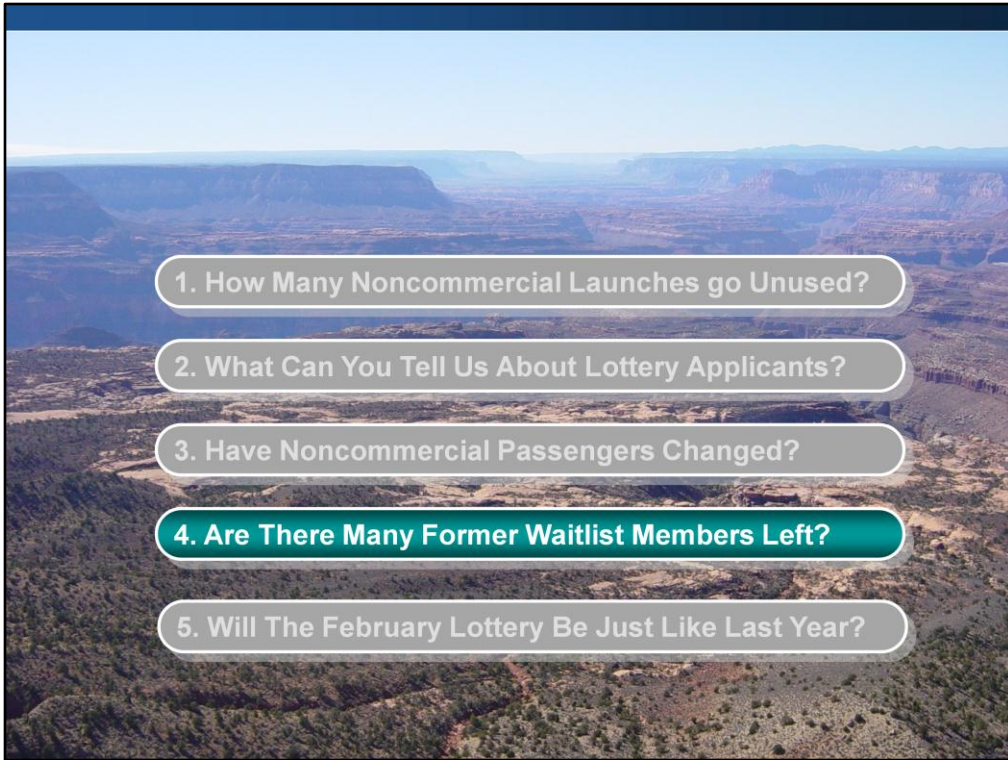
- The 2006 CRMP is accommodating additional people of all ages.
- Younger people (ages 20-40) have greatly benefitted, and so have people aged 50 to 65.



This chart separates out participant ages by the season. All seasons have a similar pattern except for winter. The chart shows that most participants on winter trips tend to be 20- to 40-year-olds.



This chart shows the different typical ages on commercial and noncommercial trips. Noncommercial trips tend to include a higher percentage of 20- to 45-year-olds while commercial trips tend to include a greater percentage of older folks and younger kids.



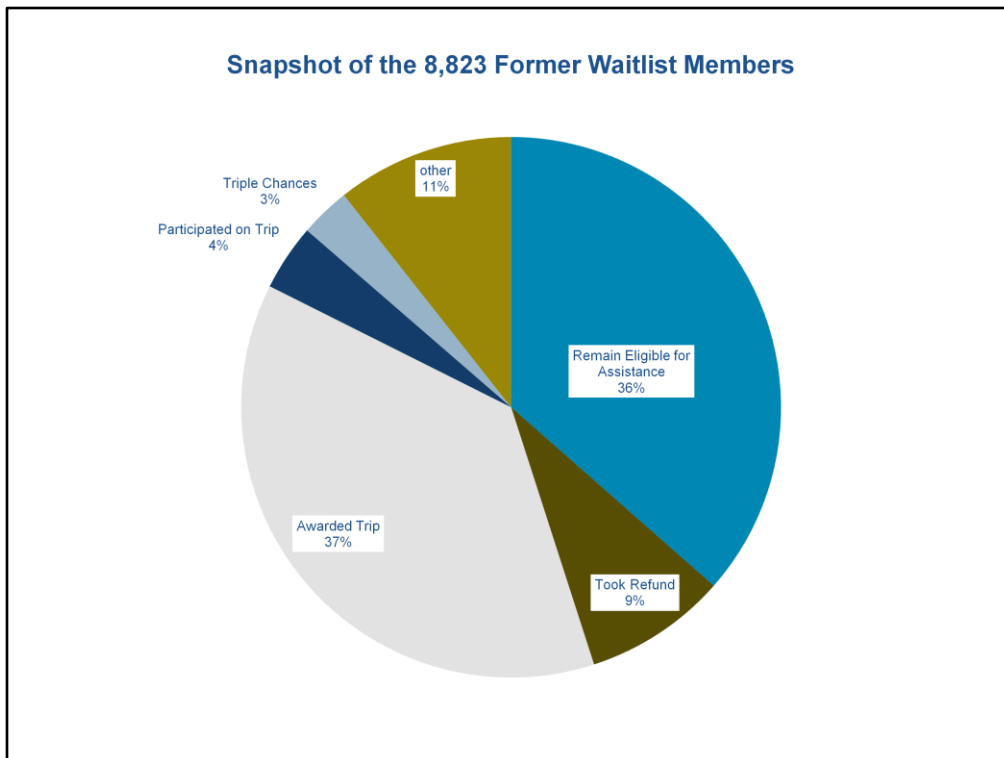
1. How Many Noncommercial Launches go Unused?

2. What Can You Tell Us About Lottery Applicants?

3. Have Noncommercial Passengers Changed?

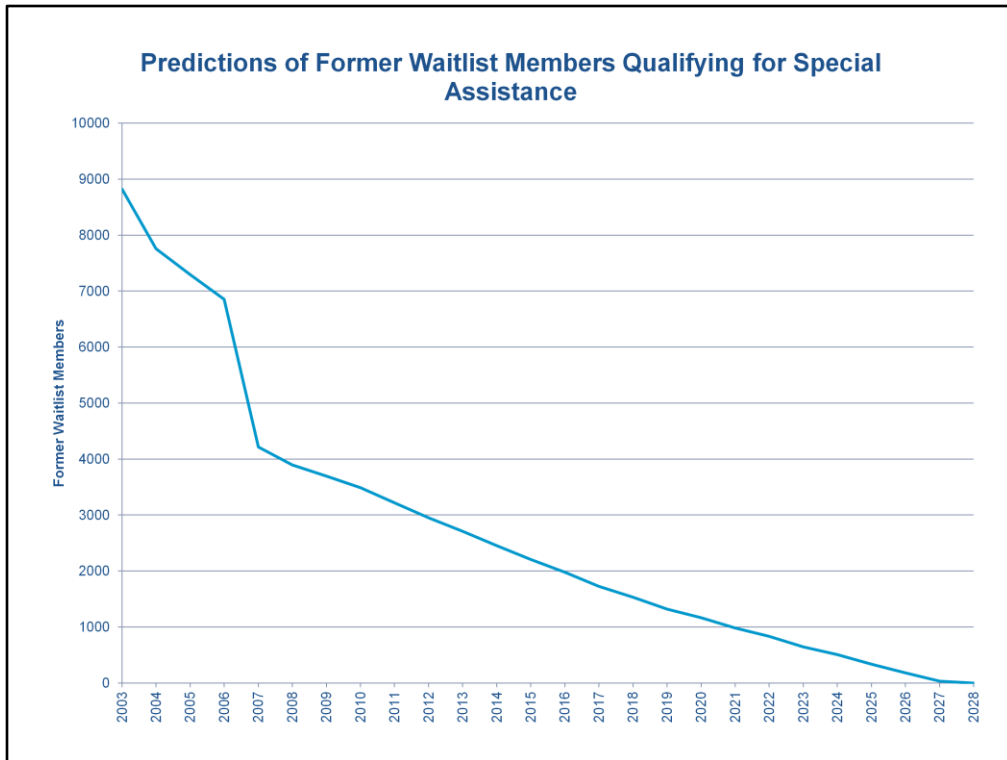
4. Are There Many Former Waitlist Members Left?

5. Will The February Lottery Be Just Like Last Year?



In 2003, before the waitlist was frozen, it had 8,823 members. This chart shows what happened to these individuals since that time:

- 9% left the waitlist after accepting refunds
- 37% have been awarded trips
- 4% participated on trips
- 3% accepted triple chances
- 11% left the waitlist for other reasons (i.e. asked to be removed, died, etc.)
- 36% remain eligible for assistance. i.e. these are the waitlist members who
 - Chose to leave the waitlist in exchange for receiving 1 extra chance in the weighted lottery for each year they had been on the waitlist.
 - Still have those extra chances. i.e. they:
 - Have not been listed on a winning lottery application (either as trip leader or as a potential alternate trip leader).
 - Have not participated on any commercial or noncommercial trip since 2006.
 - These individuals have a guarantee – that if they do not win or participate on a trip as soon or sooner than we predicted they would under the old system, the National Park Service will step forward and offer them special assistance. That special assistance involves giving them a one time opportunity to choose to either 1) schedule a trip ahead of the lottery, or 2) have their extra chances tripled.
 - The table on page 19 shows when these individuals become eligible for this assistance.



This chart shows National Park Service projections of how many former waitlist members will continue to remain eligible for special assistance (for information about who qualifies for special assistance, please see previous page).

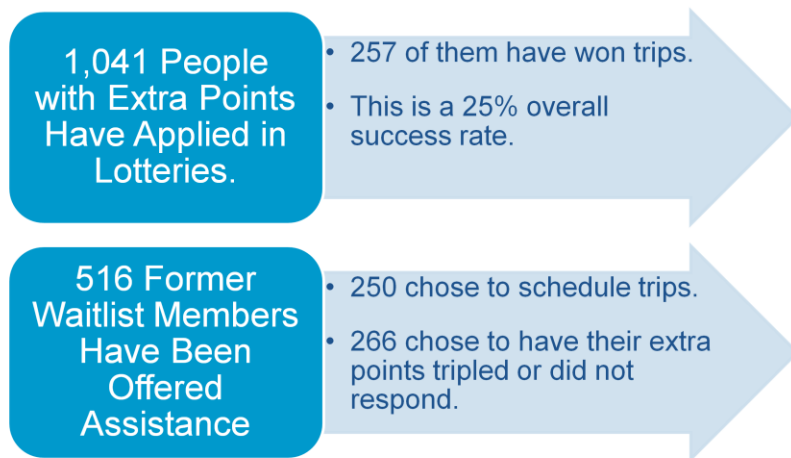
If person's 2005 waitlist number was between	Year In Which They Will Be Given Assistance	Can Pre-Schedule Trips From:	Total Who Still Qualify for this Help
05#00001 - 05#00705	2007	2008 - 2012	0 - Completed
05#00706 - 05#00915	2008	2009 - 2013	0 - Completed
05#00916 - 05#01129	2009	2010 - 2014	0 - Completed
05#01130 - 05#01358	2010	2011 - 2015	0 - Completed
05#01359 - 05#01598	2011	2012 - 2016	118
05#01599 - 05#01842	2012	2013 - 2017	132
05#01843 - 05#02096	2013	2014 - 2018	130
05#02097 - 05#02365	2014	2015 - 2019	153
05#02366 - 05#02648	2015	2016 - 2020	163
05#02649 - 05#02945	2016	2017 - 2021	165
05#02946 - 05#03253	2017	2018 - 2022	193
05#03254 - 05#03576	2018	2019 - 2023	189
05#03577 - 05#03909	2019	2020 - 2024	201
05#03910 - 05#04255	2020	2021 - 2025	186
05#04256 - 05#04618	2021	2022 - 2026	224
05#04619 - 05#04990	2022	2023 - 2027	214
05#04991 - 05#05377	2023	2024 - 2028	243
05#05378 - 05#05781	2024	2025 - 2029	241
05#05782 - 05#06206	2025	2026 - 2030	262
05#06207 - 05#06648	2026	2027 - 2031	279
05#06649 - 05#07104	2027	2028 - 2032	279
05#07105 - 05#07296	2028	2029 - 2033	117
			<hr/> 3489

This table is copied from the Grand Canyon River and Weighted Lottery FAQs. While the National Park Service hopes that most former waitlist members who accepted extra chances will participate on or win a trip sooner than they would have under the old system, it was recognized that hope was not sufficient. So, the CRMP gave these individuals “added assurance”. Basically, if any of these individuals have not participated on or won a trip as soon or sooner than they would have under the old waitlist system, the National Park Service will step forward and give them a one-time opportunity to either 1) book a trip ahead of the main lottery, or 2) have their extra chances tripled.

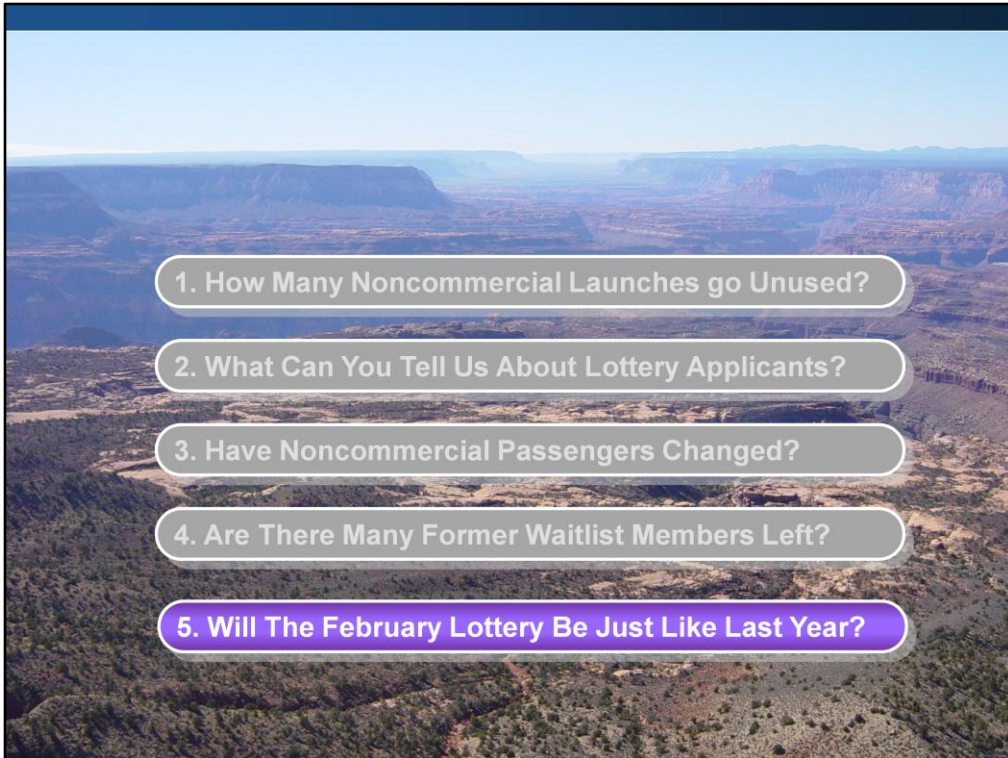
Note, we hope and expect that many of these individuals will win or participate on trips and thus not need this special assistance.

The Grand Canyon River and Weighted Lottery FAQs can be found at <http://www.nps.gov/grca/planyourvisit/river-faq.htm>

Since 2006...



The above chart shows two things. First, extra points are working as intended. Second, waitlist members are benefitting through the extra assistance the National Park Service is providing.



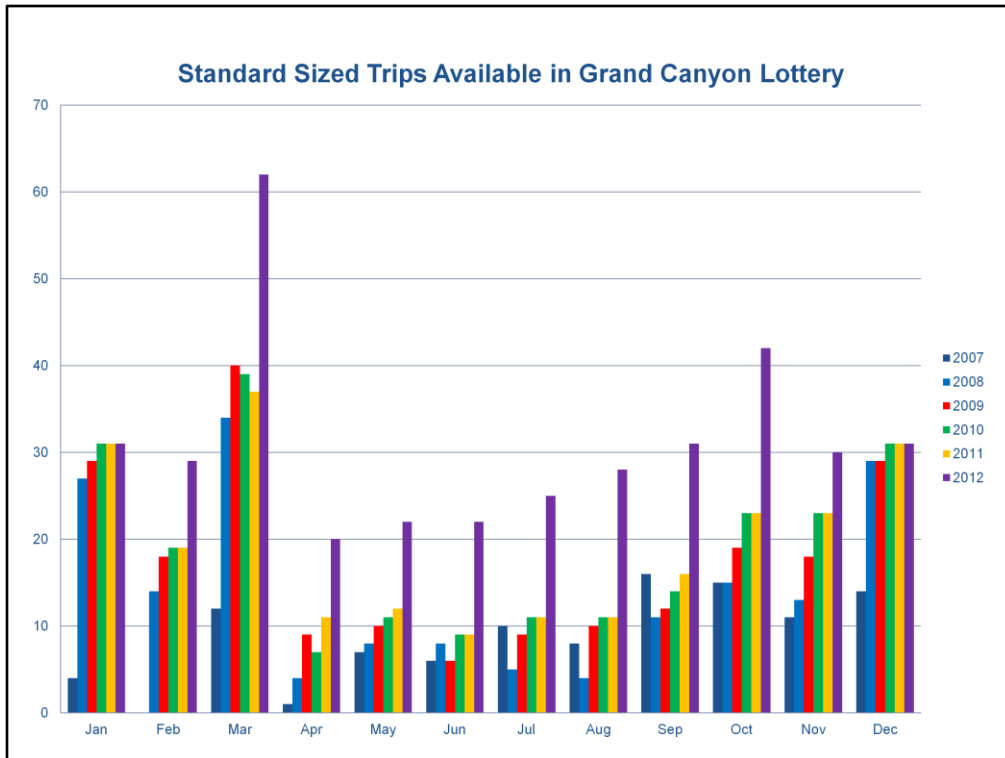
1. How Many Noncommercial Launches go Unused?

2. What Can You Tell Us About Lottery Applicants?

3. Have Noncommercial Passengers Changed?

4. Are There Many Former Waitlist Members Left?

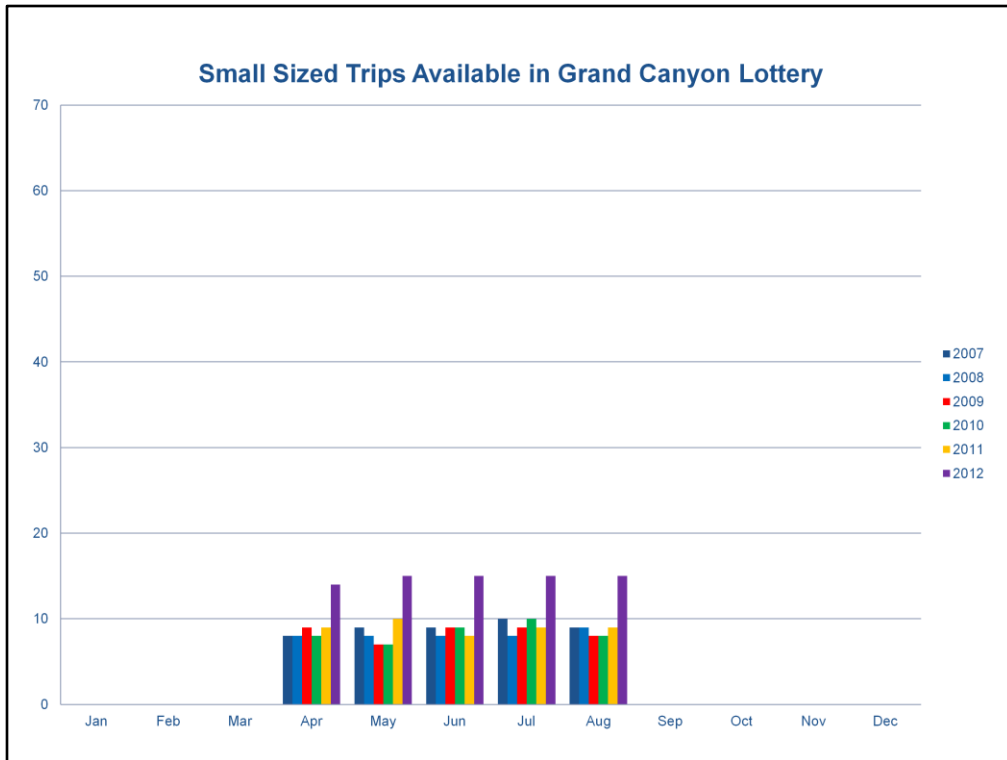
5. Will The February Lottery Be Just Like Last Year?



The coming main lottery in February 2011 will be different than previous main lotteries because it is the first one beyond the transition years. In short, as part of stages 1 and 2 of the transition from the old CRMP to the new one, many launches from calendar years 2007 through 2011 were awarded. This resulted in fewer trips being available for release in the main lotteries. The upcoming main lottery is the first one that extends past these years, thus more launch dates will be available.

The above chart shows how significantly the change may be for this upcoming lottery.

Note, some of these launches may be claimed in the next couple months as the next group of former waitlist members is offered special assistance.



This chart shows the expected increase in number of available small sized trips (1 to 8 participants) for the 2012 Main Lottery (to be held in February 2011).