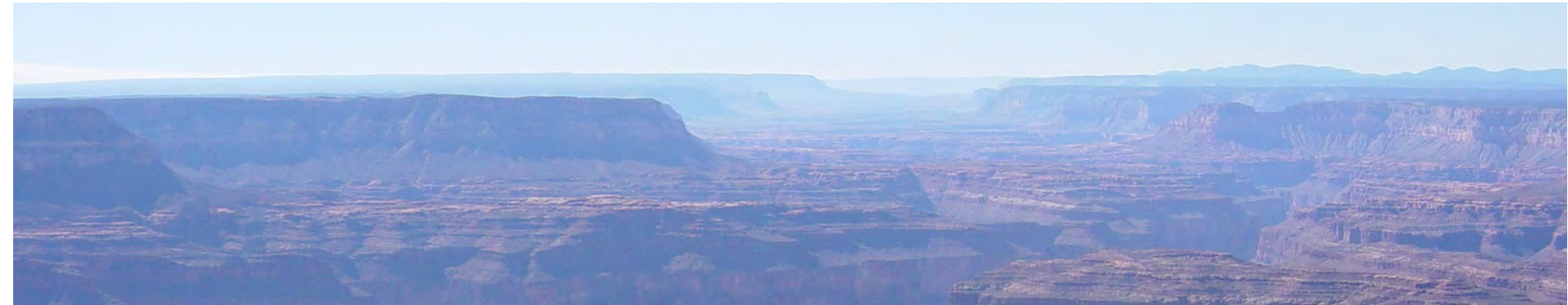


Grand Canyon River Office



River Use Update Oct-2014

-by Steve Sullivan

Topics

Commercial Use Numbers

Noncommercial Use (NC) Numbers

NC Lottery Applications

NC Trip Sizes, Boats, and TAOTs

NC Unused Launches

NC Upcoming Lotteries

Topics

Commercial Use Numbers

Noncommercial Use (NC) Numbers

NC Lottery Applications

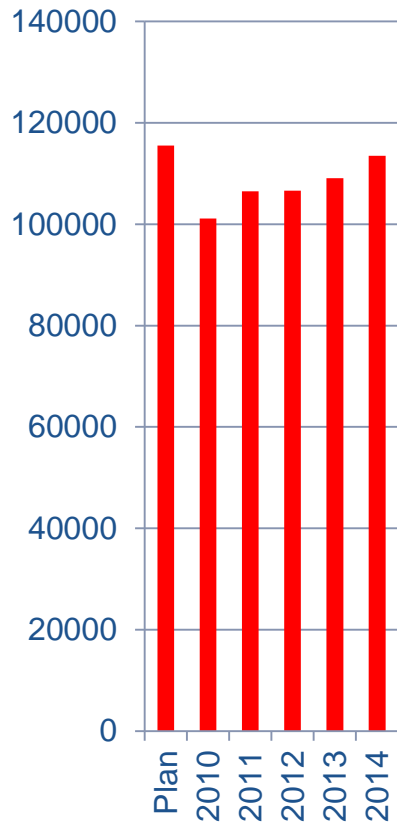
NC Trip Sizes, Boats, and TAOTs

NC Unused Launches

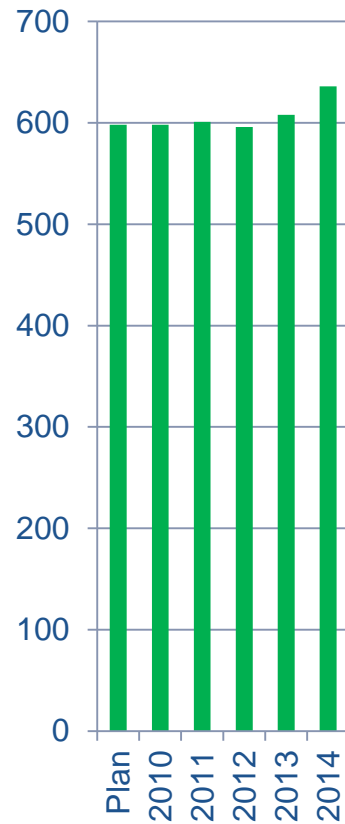
NC Upcoming Lotteries

Commercial Use Since 2010

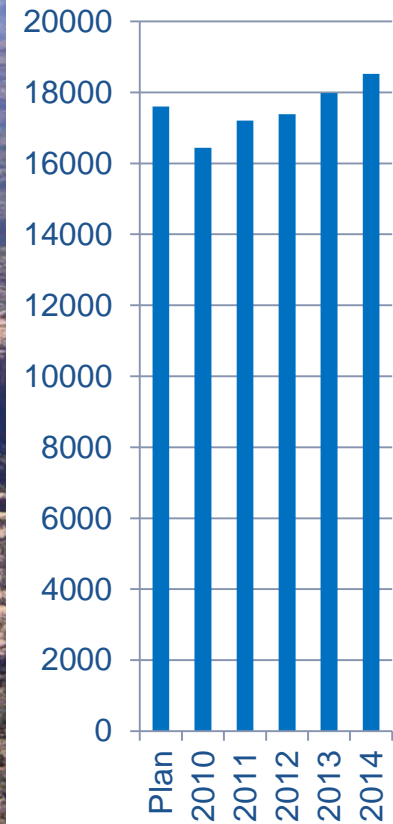
User-days



Trips



Passengers



Topics

Commercial Use Numbers

Noncommercial Use (NC) Numbers

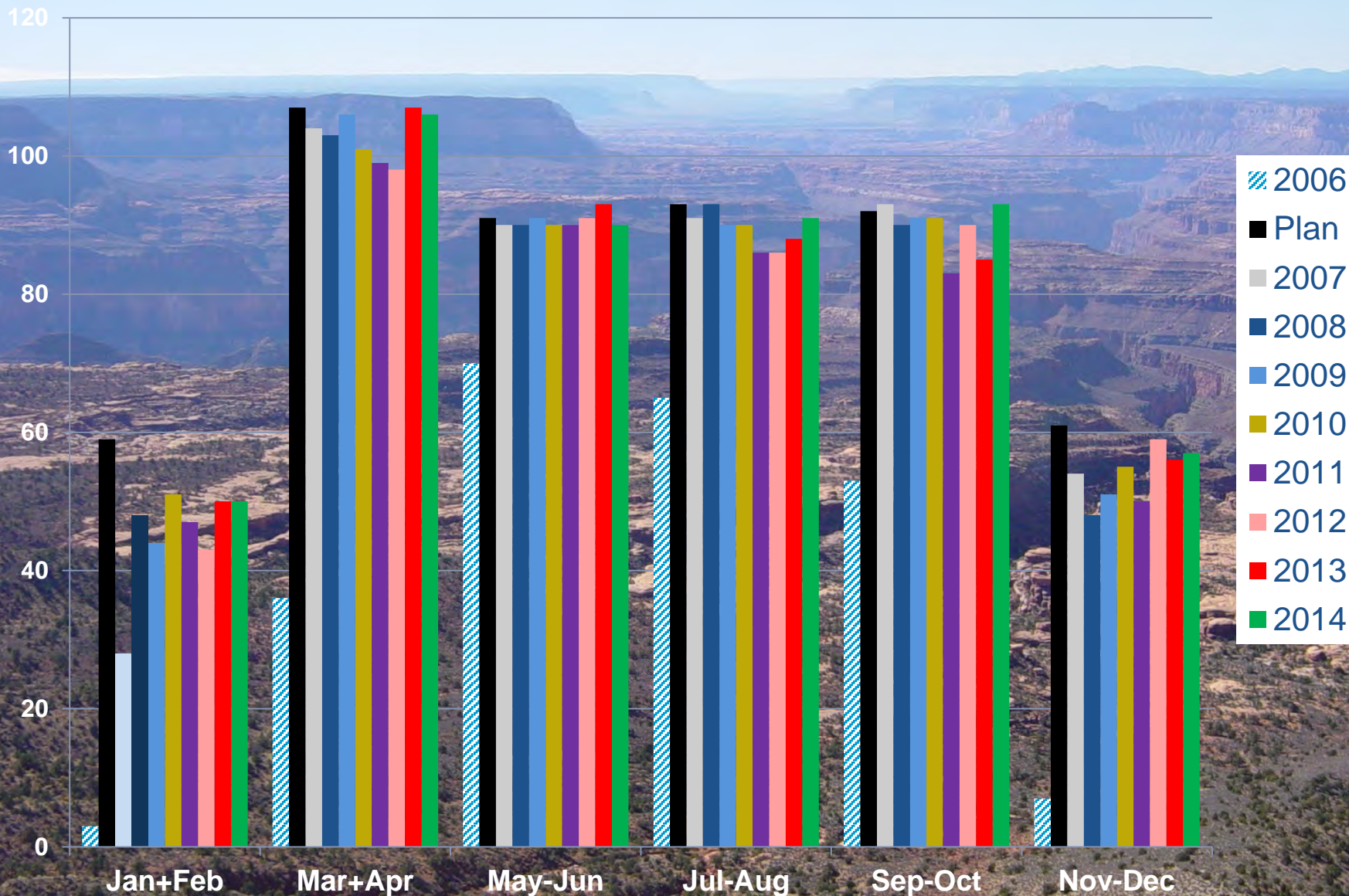
NC Lottery Applications

NC Trip Sizes, Boats, and TAOTs

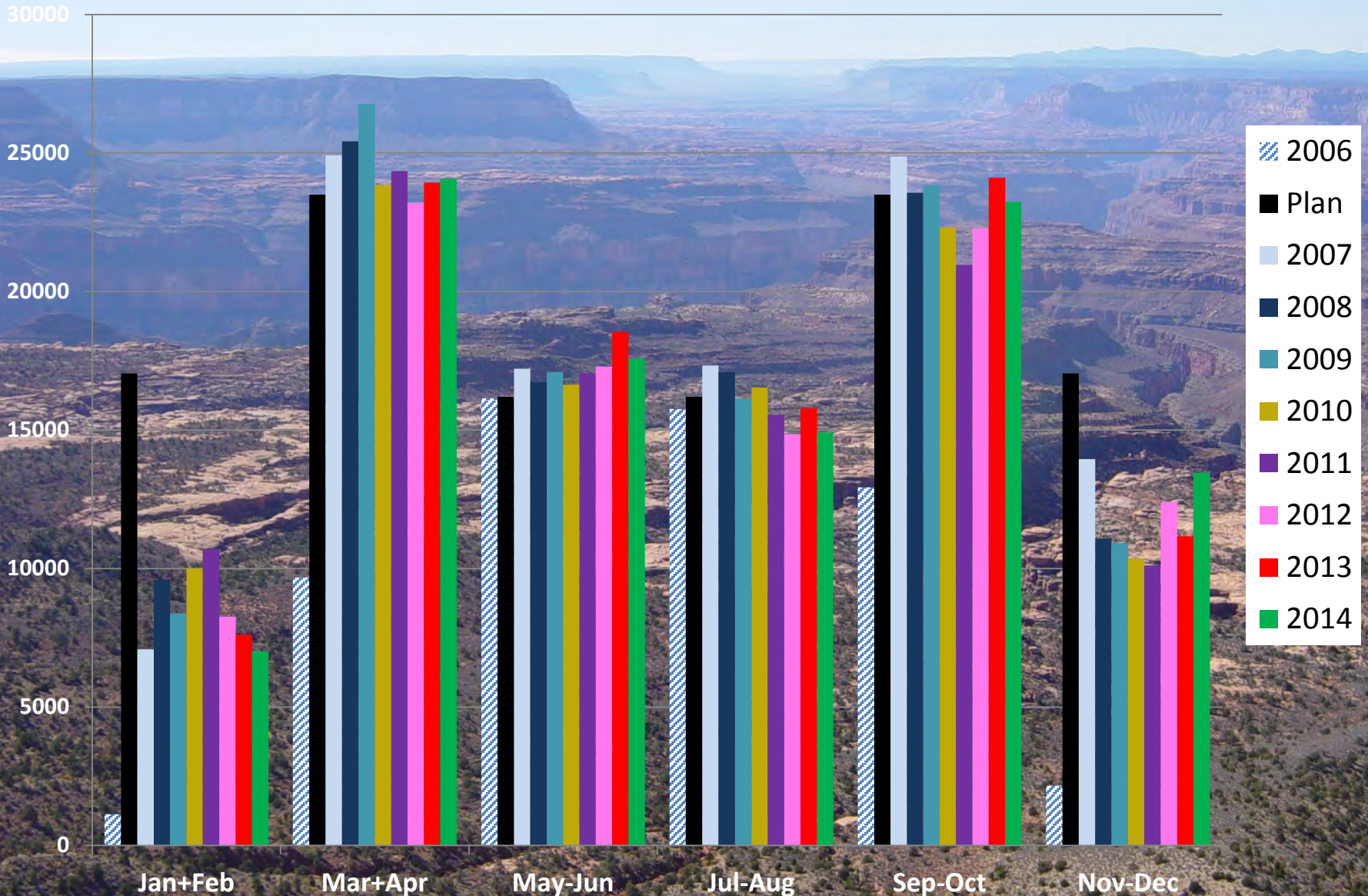
NC Unused Launches

NC Upcoming Lotteries

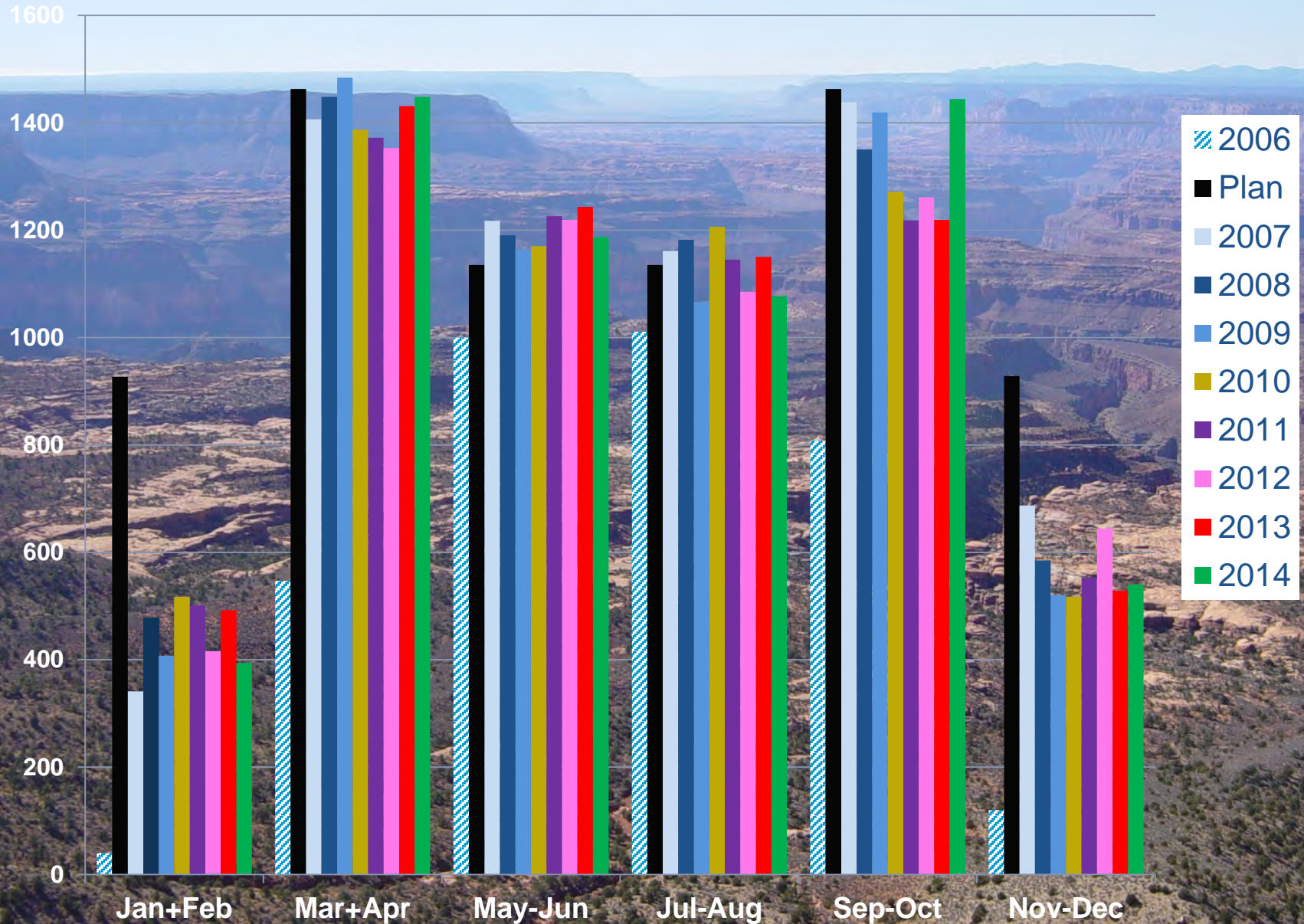
Noncommercial Trips – 9 Year Perspective



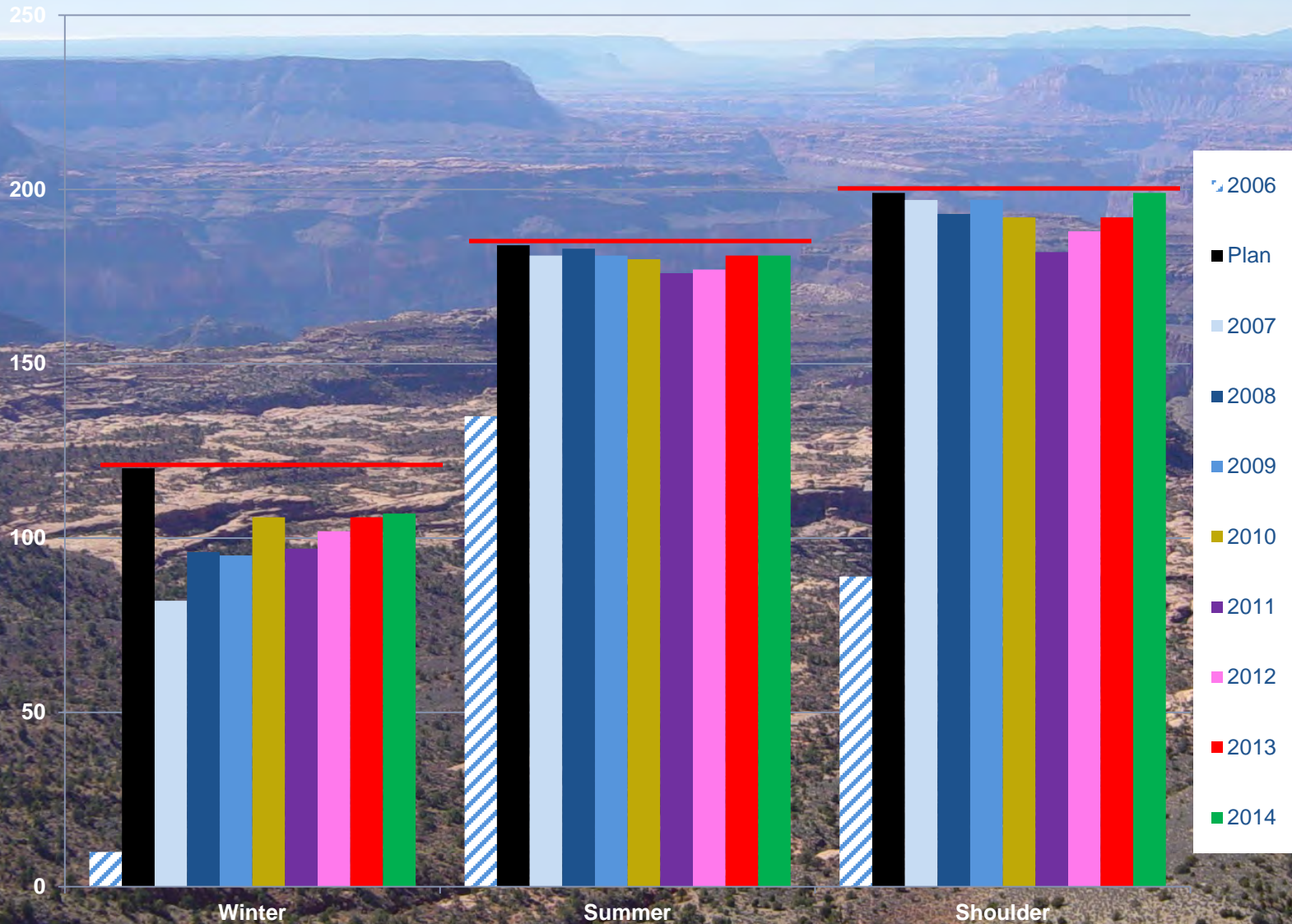
Noncommercial User-Days – 9 Year Perspective



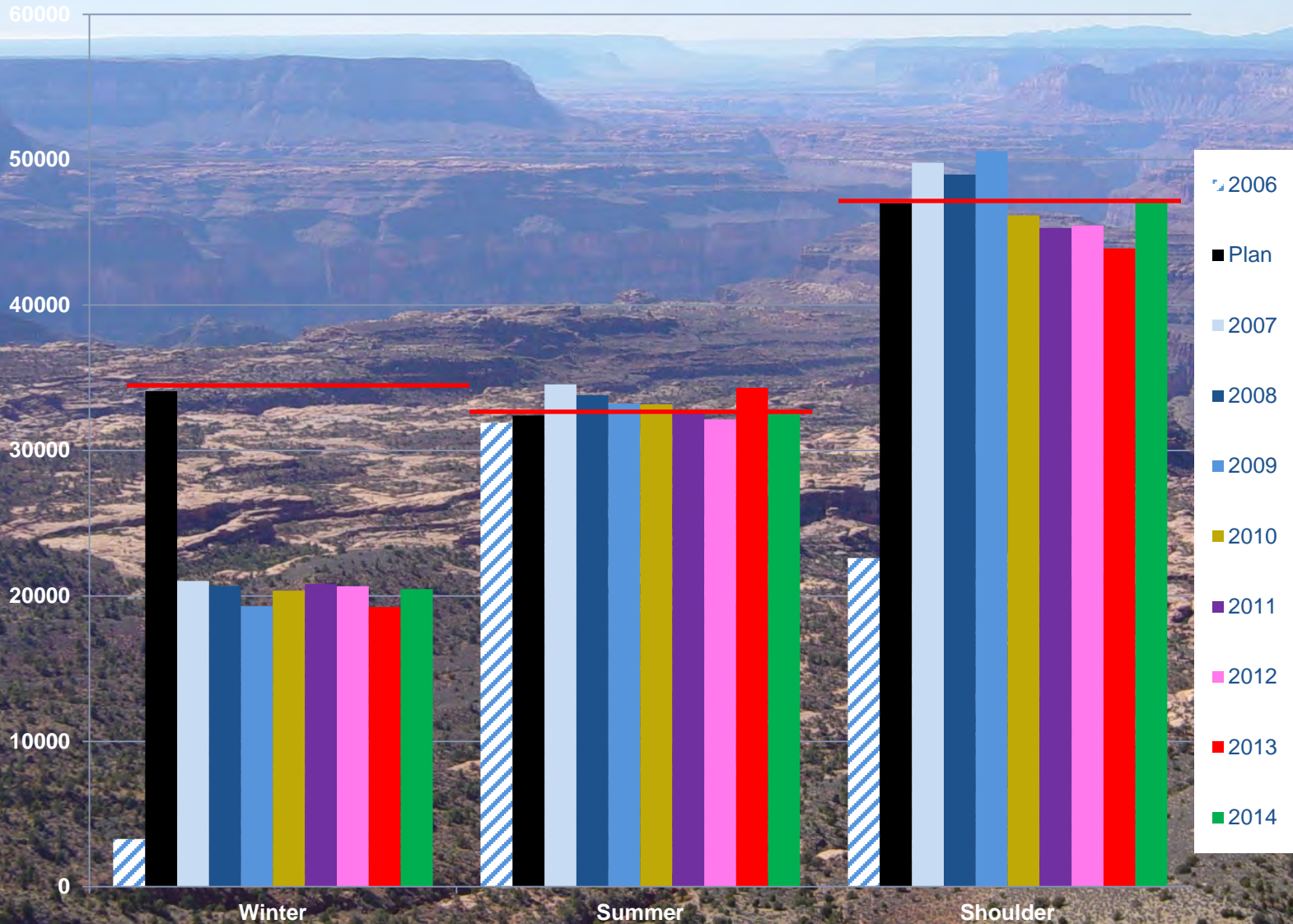
Noncommercial Passengers – 9 Year Perspective



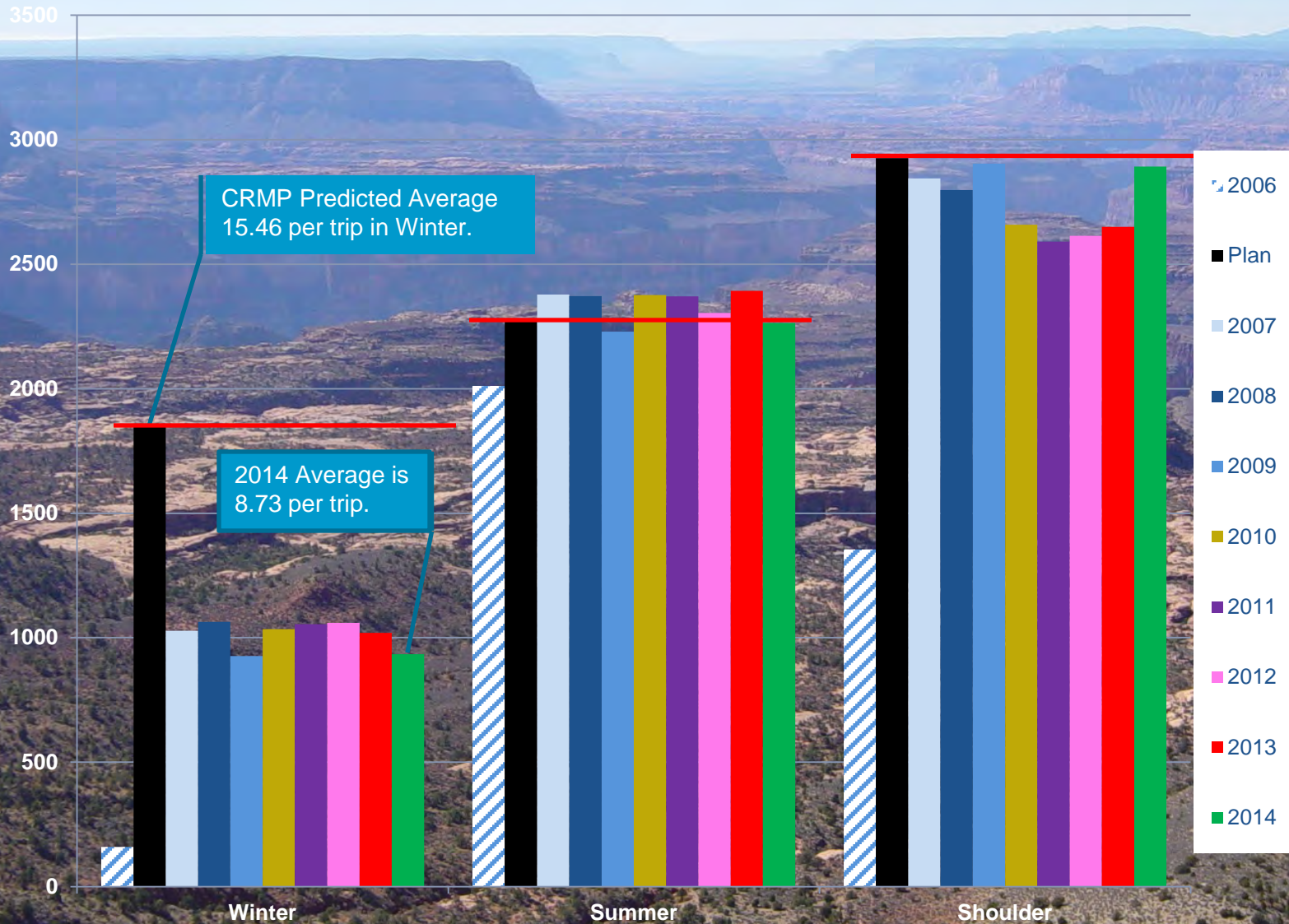
Noncommercial Trips by Season



Noncommercial User-Days by Season



Noncommercial Participants by Season



Topics

Commercial Use Numbers

Noncommercial Use (NC) Numbers

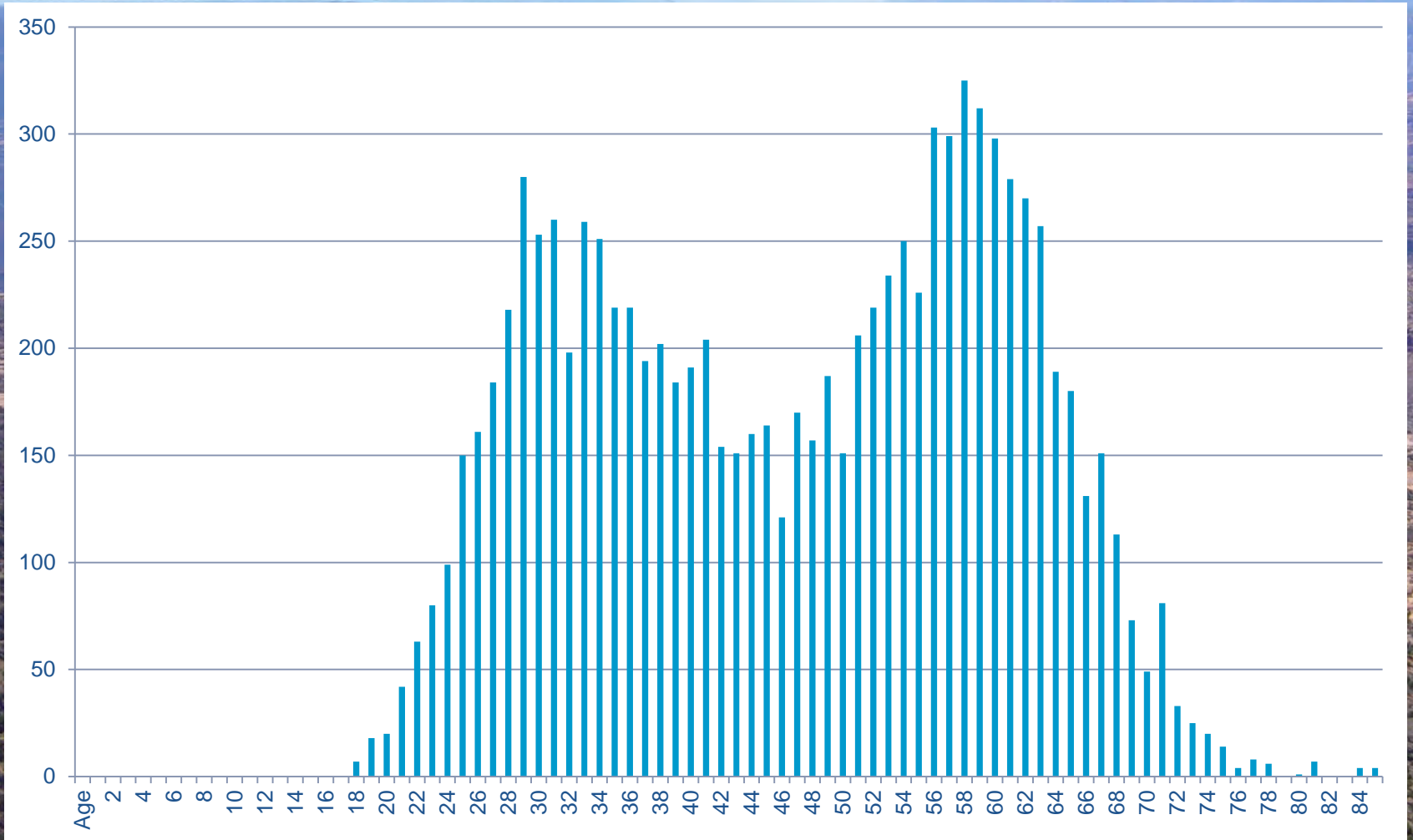
NC Lottery Applications

NC Trip Sizes, Boats, and TAOTs

NC Unused Launches

NC Upcoming Lotteries

Applicants in 2014: Who They Are By Age



Applicants in 2014: What The Lotteries Looked Like

Lottery	Number of Valid Lottery Applications	Number with Confirmed PATLs	Percent with Confirmed PATLs
2014 Follow-up Lottery, 8-28-2014	153	9	6%
2015 Follow-up Lottery, 8-21-2014	840	83	10%
2014 Follow-up Lottery, 8-7-2014	214	19	9%
2014 Follow-up Lottery, 7-17-2014	322	20	6%
2014 Follow-up Lottery, 6-19-2014	148	17	11%
2014 Follow-up Lottery, 5-22-2014	259	31	12%
2014 Follow-up Lottery, 4-17-2014	439	42	10%
2015 Follow-up Lottery, 4-10-2014	2031	320	16%
2014 Follow-up Lottery, 3-27-2014	452	34	8%
2014 Follow-up Lottery, 3-13-2014	529	58	11%
2015 Main Lottery, February 2014	4212	811	19%

Applicants in 2014: When (How Often) Did They Apply?

Total valid lottery applications submitted = 10,824

Total individuals who applied = 5,507

3,139 applied 1 times

1,177 applied 2 times

495 applied 3 times

298 applied 4 times

133 applied 5 times

96 applied 6 times

67 applied 7 times

46 applied 8 times

23 applied 9 times

17 applied 10 times

7 applied 11 times

2 applied 12 times

3 applied 13 times

2 applied 14 times

1 applied 15 times

1 applied 16 times

Applicants in 2014: Where Are They From?

Country	Number of Applications
United States of America	5,250
Canada	117
United Kingdom	19
New Zealand	16
Czech Republic	14
Australia	13
Germany	11
Slovakia	10
Italy	8
Russian Federation	7
Virgin Islands (US)	6
Ireland	5
Mexico	5
Netherlands	4
Northern Mariana Islands	3
Austria	2
Denmark	2
France	2
India	2
Spain	2
Zambia	2
Belgium	1
Brazil	1
Chile	1
Latvia	1
Poland	1
Puerto Rico	1
South Africa	1

State	Number of Applications
Colorado	1,245
California	766
Arizona	468
Utah	355
Oregon	322
Washington	309
Idaho	205
Montana	170
New Mexico	166
Wyoming	158
Alaska	130
New York	100
Texas	88
North Carolina	75
Nevada	66
Pennsylvania	51
Tennessee	41
Massachusetts	37
Florida	33
Georgia	32
Minnesota	30
Virginia	29
Maine	27
Maryland	26
New Hampshire	26
Vermont	25
Wisconsin	24
Ohio	24
West Virginia	23
Connecticut	23
Missouri	21
Kentucky	16
Illinois	15
South Carolina	15
Michigan	14
Oklahoma	12
New Jersey	11
Hawaii	10
Louisiana	9
Arkansas	8
Indiana	8
District of Columbia	7
Nebraska	6
Alabama	6
South Dakota	4
Kansas	3
Mississippi	2
Delaware	2
Rhode Island	2
Iowa	2
--	1
North Dakota	1
AP	1

Cancellation Count by Month of Launch

Month / Year	Number of Trips Cancelled
Dec 2015	11
Nov 2015	6
Oct 2015	2
Aug 2015	1
Jul 2015	5
Jun 2015	3
May 2015	5
Apr 2015	5
Mar 2015	10
Feb 2015	16
Jan 2015	23
Dec 2014	40
Nov 2014	21

Topics

Commercial Use Numbers

Noncommercial Use (NC) Numbers

NC Lottery Applications

NC Trip Sizes, Boats, and TAOTs

NC Unused Launches

NC Upcoming Lotteries

Noncommercial Trip Sizes in 2014

Participants	Standard Trips	Small Trips
1	9	1
2	7	0
3	2	1
4	9	3
5	8	7
6	7	3
7	14	6
8	12	52
9	14	0
10	12	0
11	18	0
12	18	0
13	12	0
14	19	0
15	29	0
16	211	0

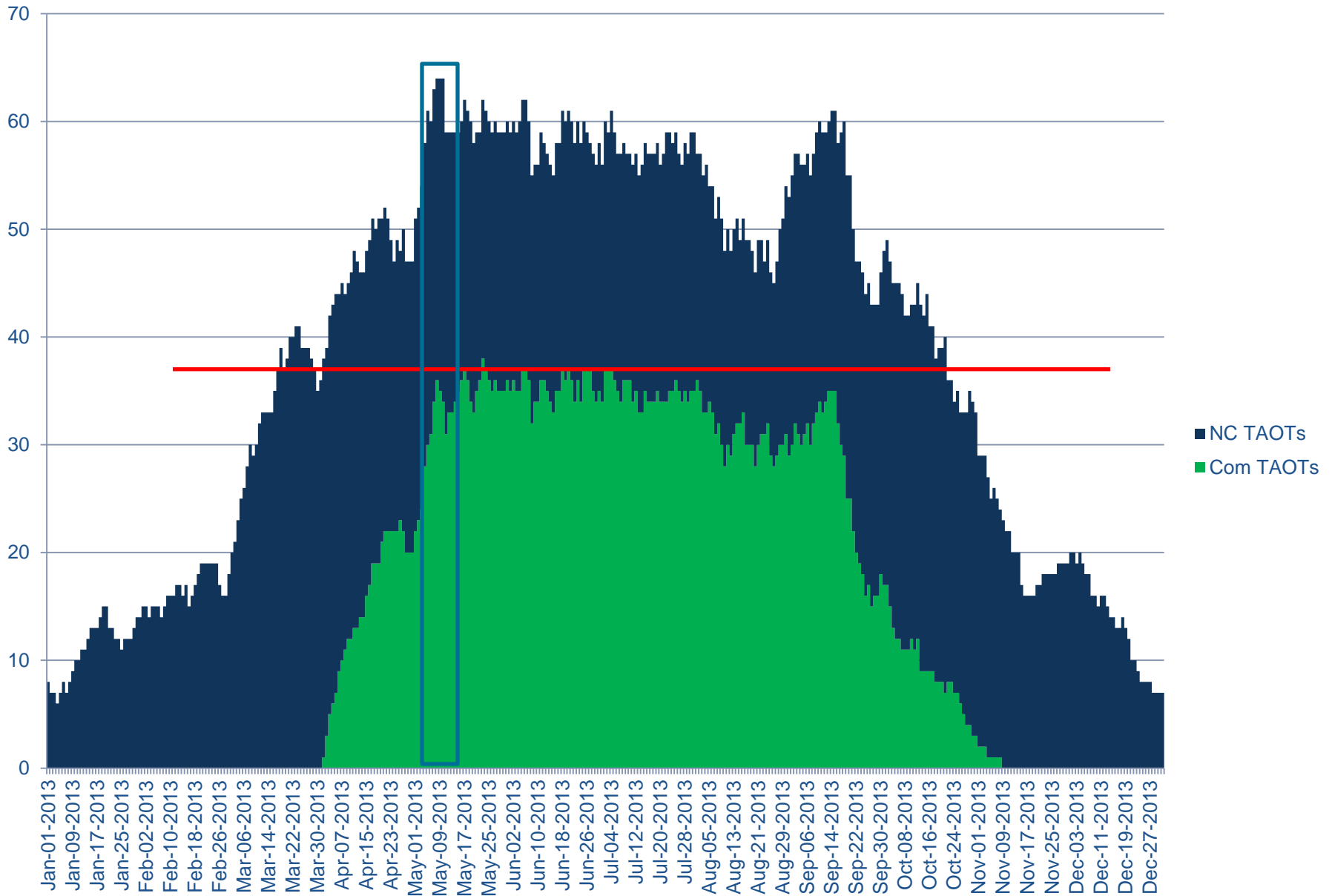
Noncommercial Trip Type in 2014

	Motor	Non-motor	Hybrid
January	0	25	0
February	0	25	0
March	0	62	0
April	2	41	1
May	4	40	1
June	3	41	1
July	5	40	0
August	7	38	1
September	1	46	2
October	0	44	0
November	0	27	0
December	0	20	0
TOTAL	22	449	6

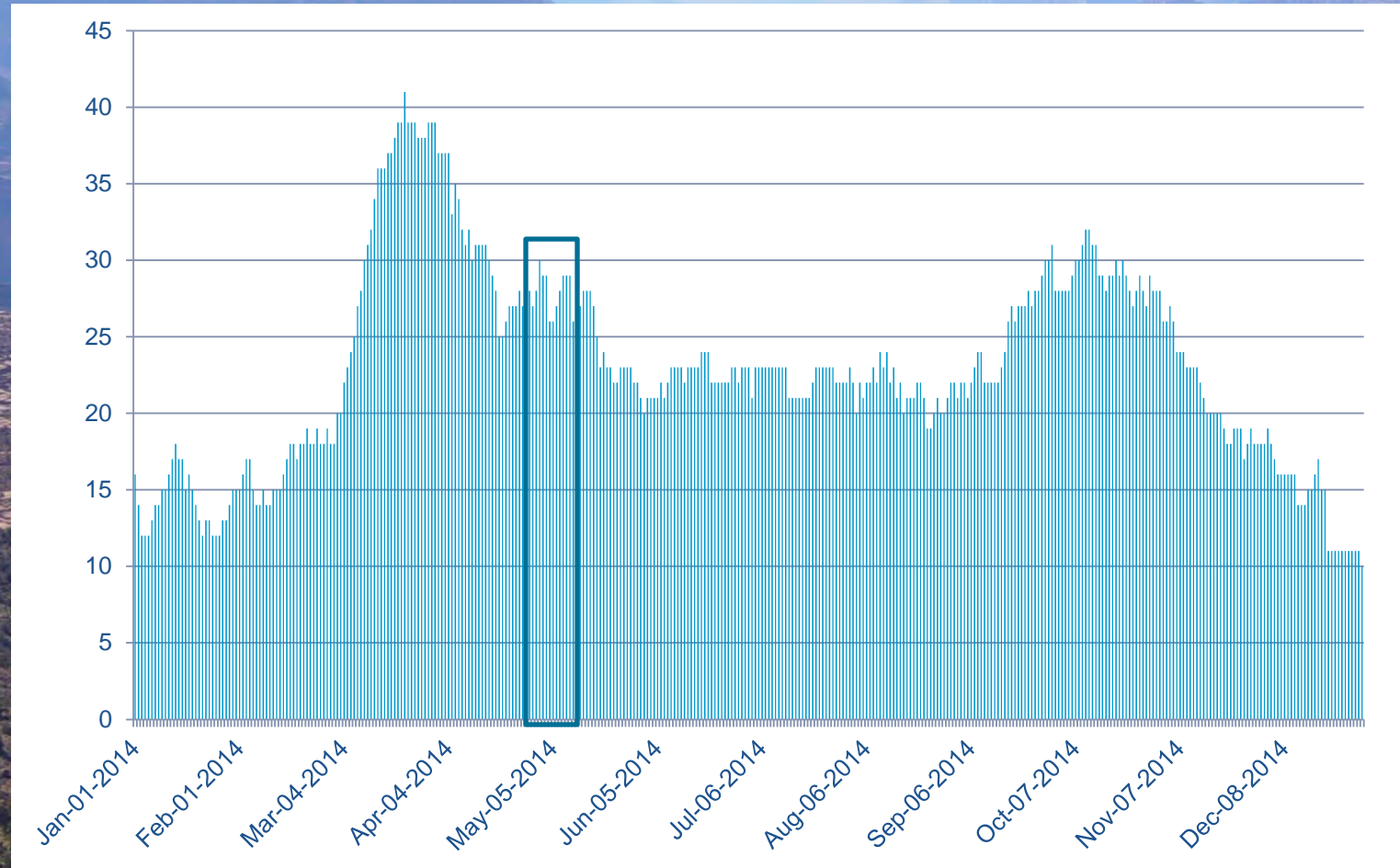
Types of Noncommercial Watercraft in 2014

	oar	kayak	other	motor	paddle board	paddle boat	dory	canoe
January	47	65	4	0	1	0	0	0
February	69	46	3	0	0	0	2	0
March	301	111	8	0	3	3	6	1
April	200	44	7	3	4	0	2	1
May	170	48	0	9	6	3	4	1
June	185	60	9	4	4	3	2	0
July	169	43	4	7	1	3	0	1
August	153	86	2	12	0	0	1	1
September	262	71	2	3	10	3	5	0
October	244	72	1	0	5	3	1	0
November	131	57	5	0	2	2	0	5
December	75	18	1	0	1	6	0	3
TOTAL	2,006	721	46	38	37	26	23	13

TAOTs in 2013



Noncommercial TAOTs in 2014



Topics

Commercial Use Numbers

Noncommercial Use (NC) Numbers

NC Lottery Applications

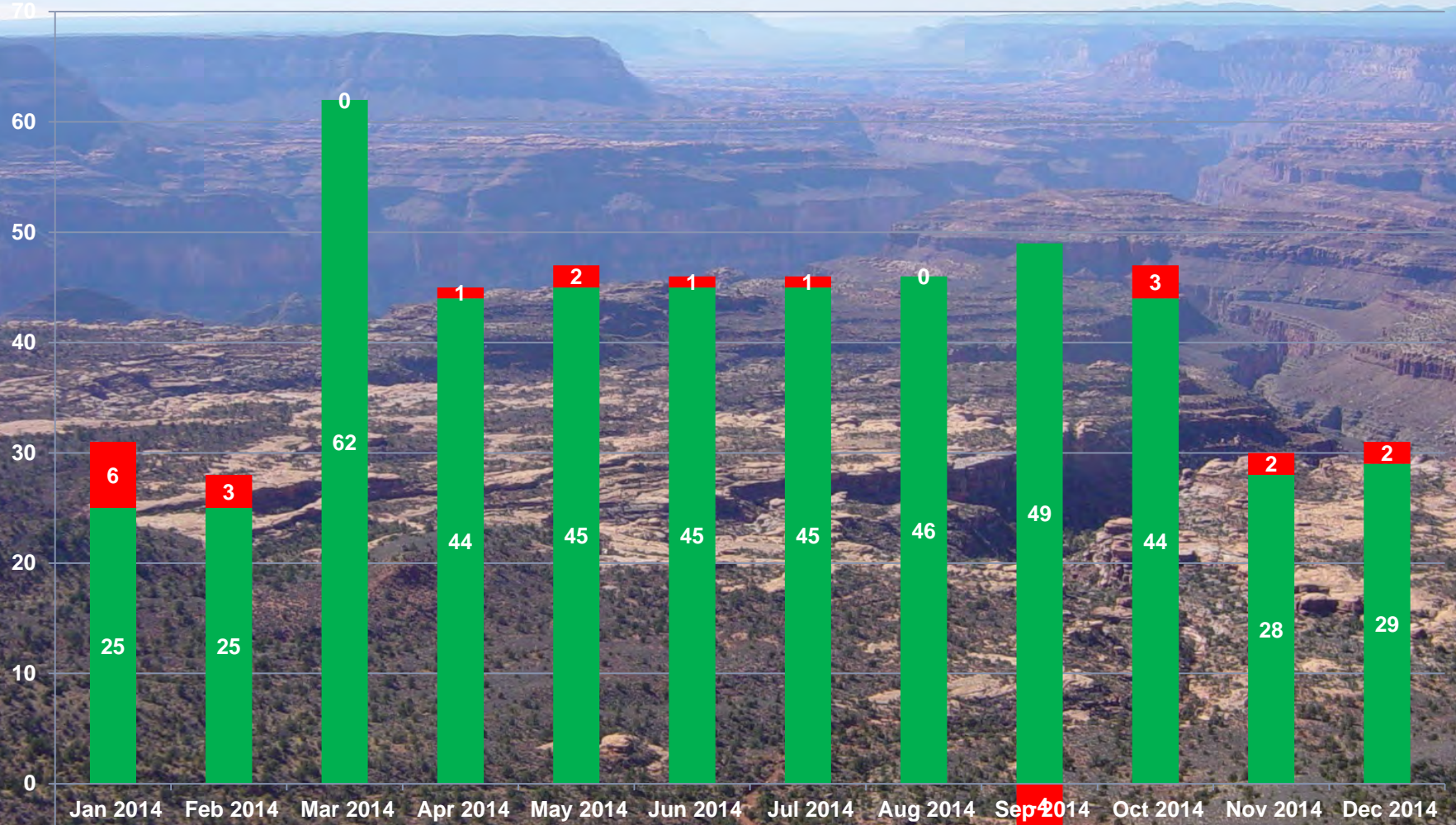
NC Trip Sizes, Boats, and TAOTs

NC Unused Launches

NC Upcoming Lotteries

10 Unused Launches So Far This Year

■ Used ■ Unused



September 2014 includes some overbookings from the Federal Government shutdown in October 2013

Topics

Commercial Use Numbers

Noncommercial Use (NC) Numbers

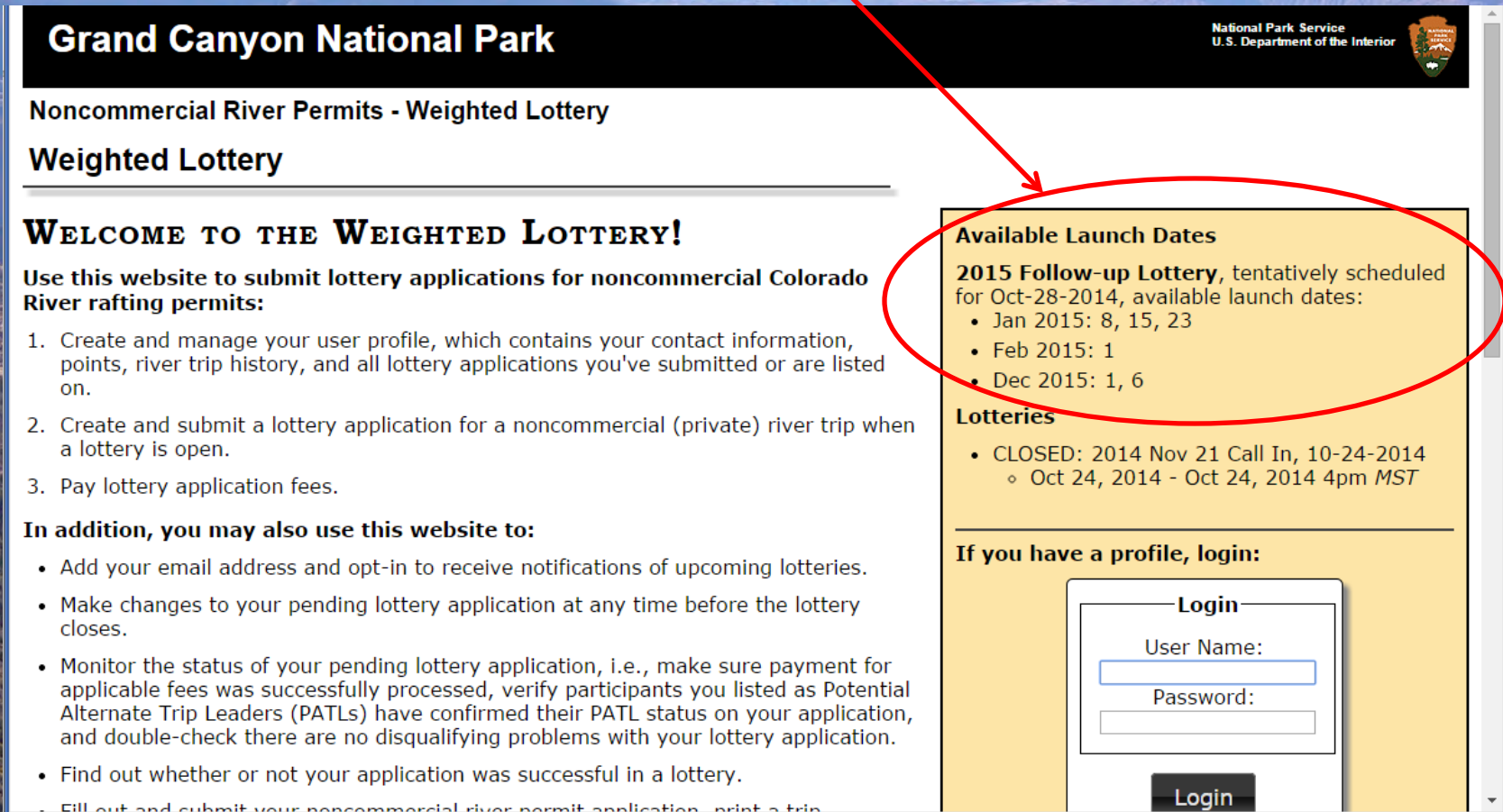
NC Lottery Applications

NC Trip Sizes, Boats, and TAOTs

NC Unused Launches

NC Upcoming Lotteries

Dates Available in Upcoming Lottery: River Office Now Pre-Announces Upcoming Dates



Grand Canyon National Park National Park Service
U.S. Department of the Interior

Noncommercial River Permits - Weighted Lottery

Weighted Lottery

WELCOME TO THE WEIGHTED LOTTERY!

Use this website to submit lottery applications for noncommercial Colorado River rafting permits:

1. Create and manage your user profile, which contains your contact information, points, river trip history, and all lottery applications you've submitted or are listed on.
2. Create and submit a lottery application for a noncommercial (private) river trip when a lottery is open.
3. Pay lottery application fees.

In addition, you may also use this website to:

- Add your email address and opt-in to receive notifications of upcoming lotteries.
- Make changes to your pending lottery application at any time before the lottery closes.
- Monitor the status of your pending lottery application, i.e., make sure payment for applicable fees was successfully processed, verify participants you listed as Potential Alternate Trip Leaders (PATLs) have confirmed their PATL status on your application, and double-check there are no disqualifying problems with your lottery application.
- Find out whether or not your application was successful in a lottery.
- Fill out and submit your noncommercial river permit application, print a trip

Available Launch Dates

2015 Follow-up Lottery, tentatively scheduled for Oct-28-2014, available launch dates:

- Jan 2015: 8, 15, 23
- Feb 2015: 1
- Dec 2015: 1, 6

Lotteries

- CLOSED: 2014 Nov 21 Call In, 10-24-2014
 - Oct 24, 2014 - Oct 24, 2014 4pm MST

If you have a profile, login:

Login

User Name:

Password:

Login

Questions?



Steve Sullivan
Steve_Sullivan@nps.gov